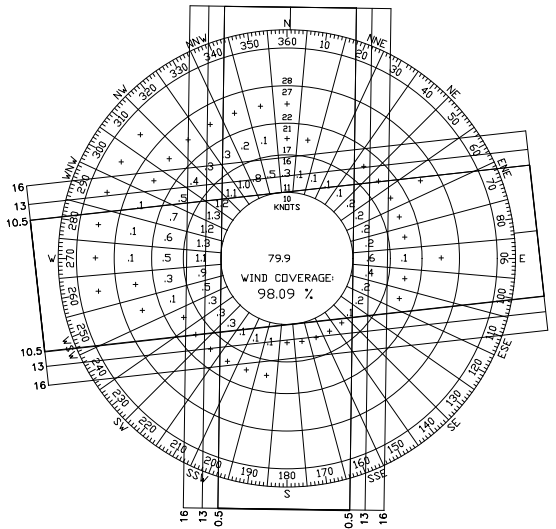
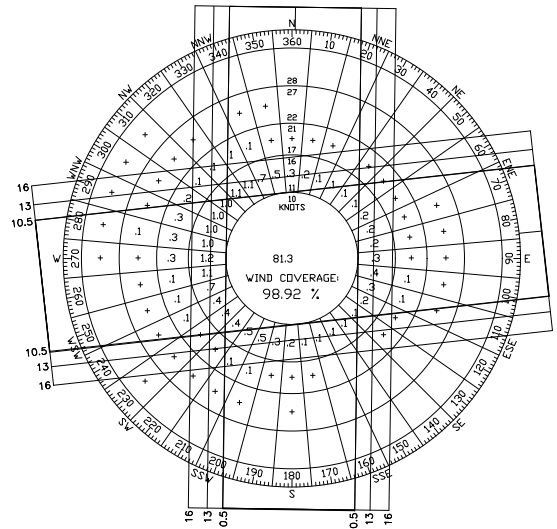


MANISTEE, MICHIGAN
PERIOD 2011-2020
TOTAL OBSERVATIONS 186,419
ALL WEATHER WIND ROSE



MANISTEE, MICHIGAN
PERIOD 2011-2020
TOTAL OBSERVATIONS 30,044
IFR WIND ROSE*



MANISTEE, MICHIGAN
PERIOD 2011-2020
TOTAL OBSERVATIONS 157,728
VFR WIND ROSE*

WINDROSE SOURCE DATA:
NOAA'S NATIONAL CLIMATIC DATA CENTER
VEACH-BAILEY FEDERAL BUILDING
151 PATTON AVE.
ASHEVILLE, NC 28801
VIA FAA GIS INTERFACE
STATION #726385 - MANISTEE COUNTY BLACKER AIRPORT

MAGNETIC DECLINATION
5° 28' WEST ±0'25"
JAN 2021
ANNUAL CHANGE
0° 1' W/YEAR
SOURCE DATE:
www.ngdc.noaa.gov/geomag-web/#declination

WIND COVERAGE BY RUNWAY				
KNOT	ALL-WEATHER	01/19	10/28	ALL RUNWAYS
		10.5	88.91%	93.64%
X-WIND COVERAGE	IFR	86.86%	93.60%	98.09%
	VFR	89.30%	93.63%	98.92%
13 KNOT	ALL-WEATHER	93.43%	97.01%	99.77%
	X-WIND COVERAGE	IFR	91.71%	96.76%
VFR		93.76%	97.05%	98.82%
	ALL-WEATHER	97.81%	99.48%	99.98%
X-WIND COVERAGE	IFR	96.64%	99.15%	99.97%
	VFR	98.03%	99.54%	99.98%

RUNWAY	RUNWAY AND APPROACH DATA							
	EXISTING				FUTURE			
	10	28	01	19	10	28	01	19
RUNWAY LENGTH	5,501'	5,501'	2,721'	2,721'	6,500'	6,500'	2,721'	2,721'
RUNWAY WIDTH	100'	100'	75'	75'	150'	150'	75'	75'
DISPLACED THRESHOLD	NONE	NONE	NONE	NONE	NONE	NONE	NONE	NONE
APPROACH REFERENCE CODE (APRC)	D/IV/4000; D/V/4000	D/IV/2400; D/V/2400	A/II(S)/VIS	A/II(S)/VIS	D/IV/4000; D/V/4000	D/IV/2400; D/V/2400	A/II(S)/VIS	A/II(S)/VIS
RUNWAY GRADIENT	.90%	.90%	.08%	.08%	.90%	.90%	.08%	.08%
RUNWAY TYPE	TRANSPORT	TRANSPORT	UTILITY	UTILITY	TRANSPORT	TRANSPORT	UTILITY	UTILITY
PAVEMENT TYPE	ASPHALT	ASPHALT	ASPHALT	ASPHALT	ASPHALT	ASPHALT	ASPHALT	ASPHALT
PAVEMENT STRENGTH (LBS.)								
SINGLE WHEEL:	> 83,000 LBS	> 83,000 LBS	> 25,500	> 25,500	> 83,000 LBS	> 83,000 LBS	> 25,500	> 25,500
DUAL WHEEL:	> 126,000 LBS	> 126,000 LBS	N/A	N/A	> 126,000 LBS	> 126,000 LBS	N/A	N/A
BY PCN:	30/F/A/X/T	30/F/A/X/T	6/F/A/X/T	6/F/A/X/T	30/F/A/X/T	30/F/A/X/T	6/F/A/X/T	6/F/A/X/T
SURFACE TREATMENT:	PEC	PEC	N/A	N/A	GROOVE	GROOVE	N/A	N/A
TAXIWAY LIGHTING	MITL	MITL	N/A	N/A	MITL	MITL	N/A	N/A
RUNWAY LIGHTING	HIRL	HIRL	MIRL	MIRL	HIRL	HIRL	MIRL	MIRL
APPROACH TYPE	D	PIR	A(V)	A(V)	D	PIR	A(NP)	A(V)
PAVEMENT MARKINGS	PRECISION		BASIC		PRECISION		BASIC	
NAVIGATIONAL AIDS	PAPI, REIL, RNAV-GPS(LPV)	PAPI, RNAV-GPS, ILS	PAPI	PAPI	PAPI, REIL, RNAV-GPS, LPV	PAPI, RNAV-GPS, ILS	PAPI, REIL, LNAV	PAPI
APPROACH LIGHTING	N/A	MALS	N/A	N/A	N/A	MALS	N/A	N/A
AAC/ADG	C-II	C-II	A-I SMALL	A-I SMALL	C-III	C-III	A-I SMALL	A-I SMALL
RUNWAY REFERENCE CODE	C-II-4000	C-II-2400	A-I-NP(VIS)	A-I-NP(VIS)	C-III-4000	C-III-2400	A-I-NP	A-I-NP(VIS)
CRITICAL AIRCRAFT	ERJ 135/140	ERJ 135/140	CIRRUS SR20/22	CIRRUS SR20/22	ERJ 175	ERJ 175	CIRRUS SR20/22	CIRRUS SR20/22
14 CFR PART 77 APPROACH SURFACE	1,000' x 4,000' x 10,000'	50,000'x1,000'x16,000'	250' x 1,250' x 5,000'	250' x 1,250' x 5,000'	1,000' x 4,000' x 10,000'	50,000'x1,000'x16,000'	500' x 2,000' x 5,000'	250' x 1,250' x 5,000'
THRESHOLD SITING SURFACE (TSS)	20:1	34:1	20:1	20:1	20:1	34:1	20:1	20:1
GLIDEPATH QUALIFICATION SURFACE (GQS)	400'x3,400'x10,000'	400'x3,400'x10,000'	250'x700'x2,250'x2,750'	250'x700'x2,250'x2,750'	400'x3,400'x10,000'	400'x3,400'x10,000'	400'x3,400'x10,000'	250'x700'x2,250'x2,750'
14 CFR PART 77 APPROACH CATEGORY/SLOPE	30:1	30:1	20:1 VISUAL	20:1 VISUAL	30:1	30:1	20:1 NPI	20:1 VISUAL
TORA/TODA/ASDA/LDA (DECLARED DISTANCE NOT IN USE)	300'x1,520'x10,200'	300'x1,520'x10,200'	300'x1,520'x10,200'	300'x1,520'x10,200'	300'x1,520'x10,200'	300'x1,520'x10,200'	300'x1,520'x10,200'	300'x1,520'x10,200'
TYPE OF AERONAUTICAL SURVEY	VERTICALLY GUIDED	VERTICALLY GUIDED	NOT VERTICALLY GUIDED	NOT VERTICALLY GUIDED	VERTICALLY GUIDED	VERTICALLY GUIDED	NOT VERTICALLY GUIDED	NOT VERTICALLY GUIDED
RUNWAY DEPARTURE SURFACE	40:1	40:1	N/A	N/A	40:1	40:1	N/A	N/A
RUNWAY VISIBILITY MINIMUMS	3/4 MILE	1/2 MILE	VISUAL	VISUAL	3/4 MILE	1/2 MILE	1 MILE	VISUAL
RUNWAY PROTECTION ZONE (RPZ)	1,700' x 1,000' x 1,510'	2,500' x 1,000' x 1,750'	1,000' x 250' x 450'	1,000' x 250' x 450'	1,700' x 1,000' x 1,510'	2,500' x 1,000' x 1,750'	1,000' x 250' x 450'	1,000' x 250' x 450'
RUNWAY SAFETY AREA (RSA)	1,000' x 400'	1,000' x 400'	240' x 120'	240' x 120'	1,000' x 500'	1,000' x 500'	240' x 120'	240' x 120'
RUNWAY OBJECT FREE AREA (ROFA)	1,000' x 800'	1,000' x 800'	240' x 250'	240' x 250'	1,000' x 800'	1,000' x 800'	240' x 250'	240' x 250'
RUNWAY OBSTACLE FREE ZONE (OFZ)	400' x 200'	400' x 200'	250' x 200'	250' x 200'	400' x 200'	400' x 200'	250' x 200'	250' x 200'
RUNWAY PRECISION OBSTACLE FREE ZONE (POFZ)	N/A	200' x 800'	N/A	N/A	N/A	200' x 800'	N/A	N/A
RUNWAY END COORDINATES	44-16-22.1565N 086-15-17.3973W	44-16-20.8016N 086-14-01.8241W	44-16-06.2166N 086-15-07.9699W	44-16-33.0758N 086-15-07.0391W	44-16-22.1565N 086-15-17.3973W	44-16-20.55N 086-13-48.09W	44-16-06.2166N 086-15-07.9699W	44-16-33.0758N 086-15-07.0391W

TAXIWAY DESIGN GROUP (TDG)	TAXIWAY STANDARDS*		
	EXISTING	FUTURE	
TAXIWAY WIDTH	40', 50', & 65'	35'	50'
TAXIWAY EDGE SAFETY MARGIN	7.5'	7.5'	10'
TAXIWAY SHOULDER WIDTH	15'	15'	20'
TAXIWAY SAFETY AREA WIDTH (TSA)	79'	79'	118'
TAXIWAY OBJECT FREE AREA WIDTH (TOFA)	131'	131'	186'
TAXIWAY OBJECT FREE AREA WIDTH (TLOFA)	115'	115'	162'

	AIRPORT DATA TABLE	
	EXISTING	FUTURE
COUNTY	MANISTEE	
TOWNSHIP	MANISTEE	
ASSOCIATED CITY	MANISTEE	
MEAN MAXIMUM TEMPERATURE	79.1°F, JULY	
TOWN & RANGE	T22N R16W	
AIRPORT REFERENCE POINT	LAT: 44° 16' 20.90" N LONG: 86° 14' 48.80" W	
AIRPORT ELEVATION	621.6 M.S.L.	
STATE EQUIVALENT SERVICE ROLE	TIER 3	
AIRPORT AND TERMINAL	AWOS, ROTATING BEACON, REIL, PAPI, MALS, ILS	AWOS, ROTATING BEACON, REIL, PAPEI, MALS, ILS
NAVIGATIONAL AIDS		
SERVICE LEVEL	LOCAL	LOCAL
APPROACH CATEGORY	C	C
AIRPLANE DESIGN GROUP	II	III
TAIL HEIGHT	ERJ 135/140 (22'-2"); ERJ 175 (33'-4")	

HORIZONTAL DATUM: NAD 83 (2018)
VERTICAL DATUM: NAVD 88

MODIFICATION TO AIRPORT DESIGN STANDARDS TABLE				
DEVIATION DESCRIPTION	EFFECTED DESIGN STANDARD	AIRSPACE CASE NO.	APPROVAL DATE	PROPOSED DISPOSITION
NO EXISTING MODS				

MANISTEE COUNTY BLACKER AIRPORT
MANISTEE, MICHIGAN
AIRPORT DATA SHEET

DRAWN: SCHREUR
DATE: 1/2021
CHECKED: VANDUNEN
DATE: 3/2021

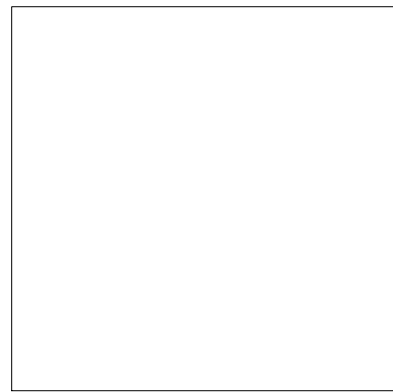
REVISIONS
NO. BY DATE

MI SITE NO: 51-1
LOC ID: MBL

Prein & Newhof
Engineers - Surveyors - Environmental - Laboratory

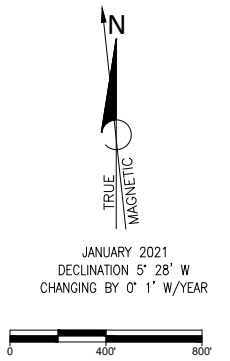
ELY.manistee.com

DRAWING NO. 2/15

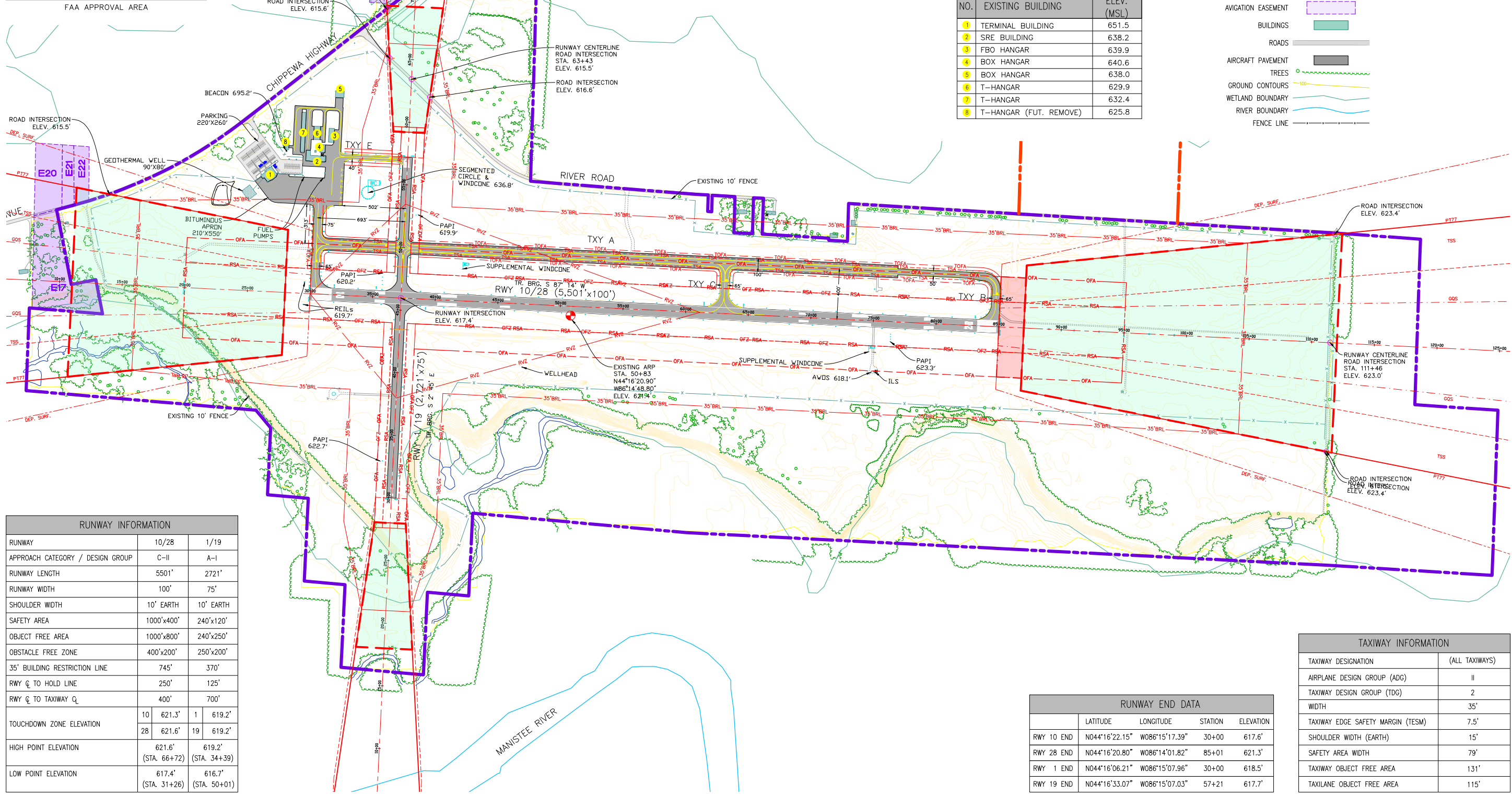


APPROACH DATA	
RUNWAY 10	RUNWAY 28
PT77 34:1 NPI 1000'x4000'x10,000'	PT77 50:1 PI 1000'x16000'x50,000'
TSS 20:1 200'x400'x3400'x10000'	TSS 34:1 200'x400'x3400'x10000'
RPZ 1700'x1000'x1510'	RPZ 2500'x1000'x1750'
GQS 30:1 300'x1520'x10000'	GQS 30:1 300'x1520'x10000'
RUNWAY 1	RUNWAY 19
PT77 20:1 VS 250'x1250'x5000'	PT77 20:1 VS 250'x1250'x5000'
TSS 20:1 250'x700'x2250'x2750'	TSS 20:1 250'x700'x2250'x2750'
RPZ 1000'x250'x450'	RPZ 1000'x250'x450'

- LEGEND (EXISTING)**
- PT77 APPROACH SURFACE (PT77) ———
 - DEPARTURE SURFACE ———
 - GLIDE PATH QUALIFICATION SURFACE (GQS) ———
 - THRESHOLD SITING SURFACE (TSS) ———
 - RWY PROTECTION ZONES (RPZ) ———
 - RWY VISIBILITY ZONE (RVZ) ———
 - RWY SAFETY AREA (RSA) ———
 - OBJECT FREE AREA (OFA) ———
 - OBJECT FREE ZONE (OFZ) ———
 - PRECISION OBSTACLE FREE ZONE (POFZ) ———
 - TXY SAFETY AREA (TSA) ———
 - TXY OBJECT FREE AREA (TOFA) ———
 - 35' BLDG. RESTRICTION LINE (35' BRL) ———
 - PROPERTY LINE ———
 - AVIGATION EASEMENT ———
 - BUILDINGS ———
 - ROADS ———
 - AIRCRAFT PAVEMENT ———
 - TREES ———
 - GROUND CONTOURS ———
 - WETLAND BOUNDARY ———
 - RIVER BOUNDARY ———
 - FENCE LINE ———



NO.	EXISTING BUILDING	ELEV. (MSL)
1	TERMINAL BUILDING	651.5
2	SRE BUILDING	638.2
3	FBO HANGAR	639.9
4	BOX HANGAR	640.6
5	BOX HANGAR	638.0
6	T-HANGAR	629.9
7	T-HANGAR	632.4
8	T-HANGAR (FUT. REMOVE)	625.8



RUNWAY INFORMATION			
RUNWAY	10/28	1/19	
APPROACH CATEGORY / DESIGN GROUP	C-II	A-I	
RUNWAY LENGTH	5501'	2721'	
RUNWAY WIDTH	100'	75'	
SHOULDER WIDTH	10' EARTH	10' EARTH	
SAFETY AREA	1000'x400'	240'x120'	
OBJECT FREE AREA	1000'x800'	240'x250'	
OBSTACLE FREE ZONE	400'x200'	250'x200'	
35' BUILDING RESTRICTION LINE	745'	370'	
RWY CL TO HOLD LINE	250'	125'	
RWY CL TO TAXIWAY CL	400'	700'	
TOUCHDOWN ZONE ELEVATION	10 621.3'	1 619.2'	
	28 621.6'	19 619.2'	
HIGH POINT ELEVATION	621.6'	619.2'	
	(STA. 66+72)	(STA. 34+39)	
LOW POINT ELEVATION	617.4'	616.7'	
	(STA. 31+26)	(STA. 50+01)	

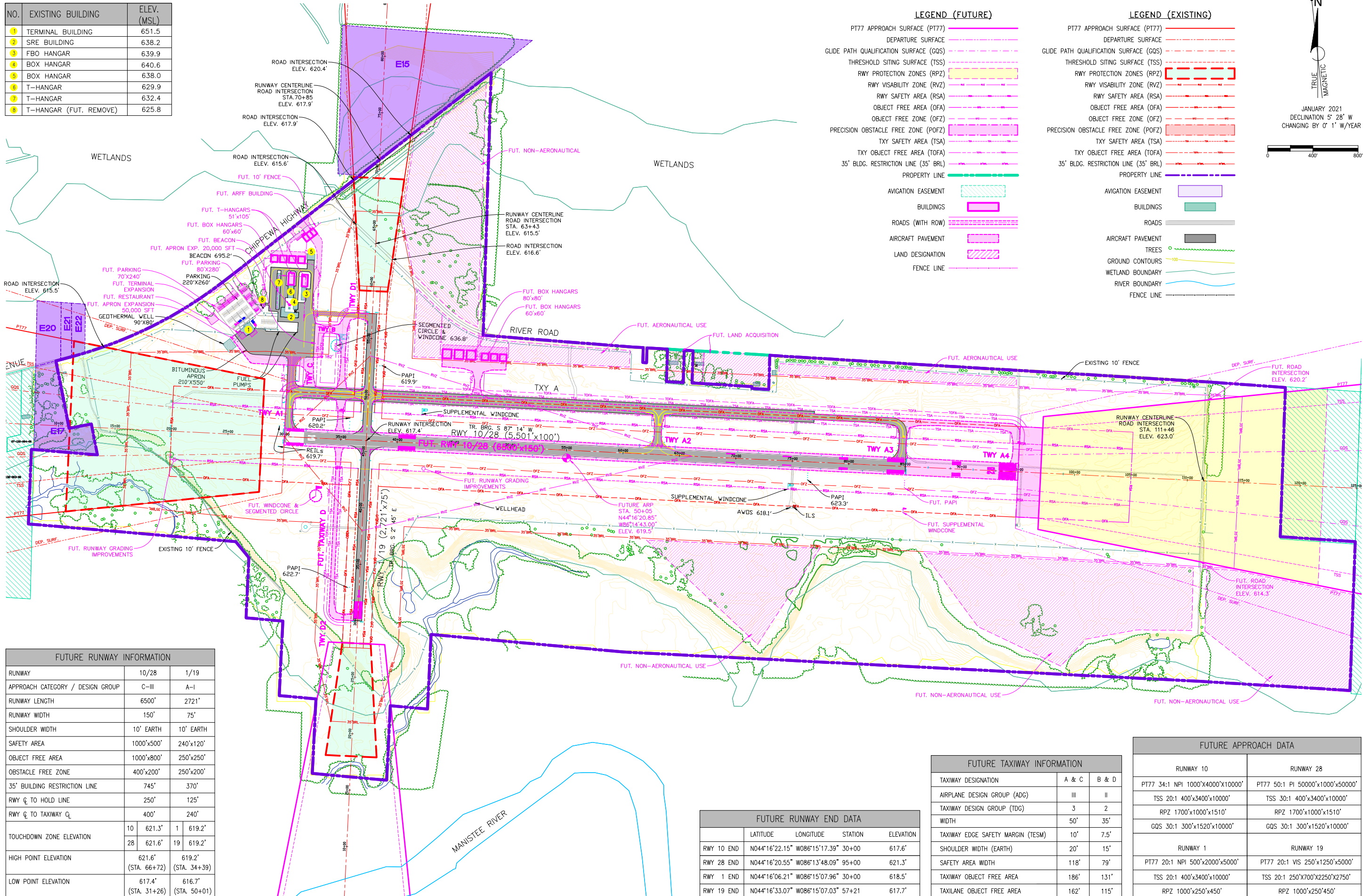
RUNWAY END DATA				
	LATITUDE	LONGITUDE	STATION	ELEVATION
RWY 10 END	N044°16'22.15"	W086°15'17.39"	30+00	617.6'
RWY 28 END	N044°16'20.80"	W086°14'01.82"	85+01	621.3'
RWY 1 END	N044°16'06.21"	W086°15'07.96"	30+00	618.5'
RWY 19 END	N044°16'33.07"	W086°15'07.03"	57+21	617.7'

TAXIWAY INFORMATION	
TAXIWAY DESIGNATION	(ALL TAXIWAYS)
AIRPLANE DESIGN GROUP (ADG)	II
TAXIWAY DESIGN GROUP (TDG)	2
WIDTH	35'
TAXIWAY EDGE SAFETY MARGIN (TESM)	7.5'
SHOULDER WIDTH (EARTH)	15'
SAFETY AREA WIDTH	79'
TAXIWAY OBJECT FREE AREA	131'
TAXILANE OBJECT FREE AREA	115'

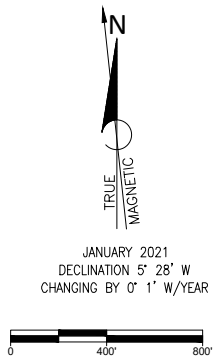
I:\CADD\PROJECTS\2020\202008_MBL_AIP\DWG\AIP_03 - EXISTING.LWG - JANUARY 2021 - 02:36pm - Prein&Newhof

MANISTEE COUNTY BLACKCKER AIRPORT	MANISTEE, MICHIGAN	EXISTING ALP	DRAWING NO.	DATE
Prein&Newhof <small>Engineers - Surveyors - Environmental Laboratory</small>			3/15	1/2021
DRAWN: SCHREUR		CHECKED: VANDUINEN		DATE: 3/2021
DATE: 1/2021		DATE: 3/2021		BY: DATE
MI SITE NO: 51-1		LOC ID: MBL		NO. REVISIONS

NO.	EXISTING BUILDING	ELEV. (MSL)
1	TERMINAL BUILDING	651.5
2	SRE BUILDING	638.2
3	FBO HANGAR	639.9
4	BOX HANGAR	640.6
5	BOX HANGAR	638.0
6	T-HANGAR	629.9
7	T-HANGAR	632.4
8	T-HANGAR (FUT. REMOVE)	625.8



LEGEND (FUTURE)		LEGEND (EXISTING)	
PT77 APPROACH SURFACE (PT77)		PT77 APPROACH SURFACE (PT77)	
DEPARTURE SURFACE		DEPARTURE SURFACE	
GLIDE PATH QUALIFICATION SURFACE (GQS)		GLIDE PATH QUALIFICATION SURFACE (GQS)	
THRESHOLD SITING SURFACE (TSS)		THRESHOLD SITING SURFACE (TSS)	
RWY PROTECTION ZONES (RPZ)		RWY PROTECTION ZONES (RPZ)	
RWY VISIBILITY ZONE (RVZ)		RWY VISIBILITY ZONE (RVZ)	
RWY SAFETY AREA (RSA)		RWY SAFETY AREA (RSA)	
OBJECT FREE AREA (OFA)		OBJECT FREE AREA (OFA)	
OBJECT FREE ZONE (OFZ)		OBJECT FREE ZONE (OFZ)	
PRECISION OBSTACLE FREE ZONE (POFZ)		PRECISION OBSTACLE FREE ZONE (POFZ)	
TXY SAFETY AREA (TSA)		TXY SAFETY AREA (TSA)	
TXY OBJECT FREE AREA (TOFA)		TXY OBJECT FREE AREA (TOFA)	
35' BLDG. RESTRICTION LINE (35' BRL)		35' BLDG. RESTRICTION LINE (35' BRL)	
PROPERTY LINE		PROPERTY LINE	
AVIGATION EASEMENT		AVIGATION EASEMENT	
BUILDINGS		BUILDINGS	
ROADS (WITH ROW)		ROADS	
AIRCRAFT PAVEMENT		AIRCRAFT PAVEMENT	
LAND DESIGNATION		TREES	
FENCE LINE		GROUND CONTOURS	
		WETLAND BOUNDARY	
		RIVER BOUNDARY	
		FENCE LINE	



FUTURE RUNWAY INFORMATION				
RUNWAY	10/28	1/19		
APPROACH CATEGORY / DESIGN GROUP	C-III	A-1		
RUNWAY LENGTH	6500'	2721'		
RUNWAY WIDTH	150'	75'		
SHOULDER WIDTH	10' EARTH	10' EARTH		
SAFETY AREA	1000'x500'	240'x120'		
OBJECT FREE AREA	1000'x800'	250'x250'		
OBSTACLE FREE ZONE	400'x200'	250'x200'		
35' BUILDING RESTRICTION LINE	745'	370'		
RWY CL TO HOLD LINE	250'	125'		
RWY CL TO TAXIWAY CL	400'	240'		
TOUCHDOWN ZONE ELEVATION	10	621.3'	1	619.2'
	28	621.6'	19	619.2'
HIGH POINT ELEVATION		621.6'		619.2'
		(STA. 66+72)		(STA. 34+39)
LOW POINT ELEVATION		617.4'		616.7'
		(STA. 31+26)		(STA. 50+01)

FUTURE RUNWAY END DATA				
	LATITUDE	LONGITUDE	STATION	ELEVATION
RWY 10 END	N044°16'22.15"	W086°15'17.39"	30+00	617.6'
RWY 28 END	N044°16'20.55"	W086°13'48.09"	95+00	621.3'
RWY 1 END	N044°16'06.21"	W086°15'07.96"	30+00	618.5'
RWY 19 END	N044°16'33.07"	W086°15'07.03"	57+21	617.7'

FUTURE TAXIWAY INFORMATION			
TAXIWAY DESIGNATION	A & C	B & D	
AIRPLANE DESIGN GROUP (ADG)	III	II	
TAXIWAY DESIGN GROUP (TDG)	3	2	
WIDTH	50'	35'	
TAXIWAY EDGE SAFETY MARGIN (TESM)	10'	7.5'	
SHOULDER WIDTH (EARTH)	20'	15'	
SAFETY AREA WIDTH	118'	79'	
TAXIWAY OBJECT FREE AREA	186'	131'	
TAXILANE OBJECT FREE AREA	162'	115'	

FUTURE APPROACH DATA			
	RUNWAY 10		RUNWAY 28
	PT77 34:1 NPI 1000'x4000'x10000'		PT77 50:1 PI 50000'x1000'x50000'
	TSS 20:1 400'x3400'x10000'		TSS 30:1 400'x3400'x10000'
	RPZ 1700'x1000'x1510'		RPZ 1700'x1000'x1510'
	GQS 30:1 300'x1520'x10000'		GQS 30:1 300'x1520'x10000'
	RUNWAY 1		RUNWAY 19
	PT77 20:1 NPI 500'x2000'x5000'		PT77 20:1 VIS 250'x1250'x5000'
	TSS 20:1 400'x3400'x10000'		TSS 20:1 250'x700'x2250'x2750'
	RPZ 1000'x250'x450'		RPZ 1000'x250'x450'

Manistee County Blacker Airport
Manistee, Michigan
Future ALP

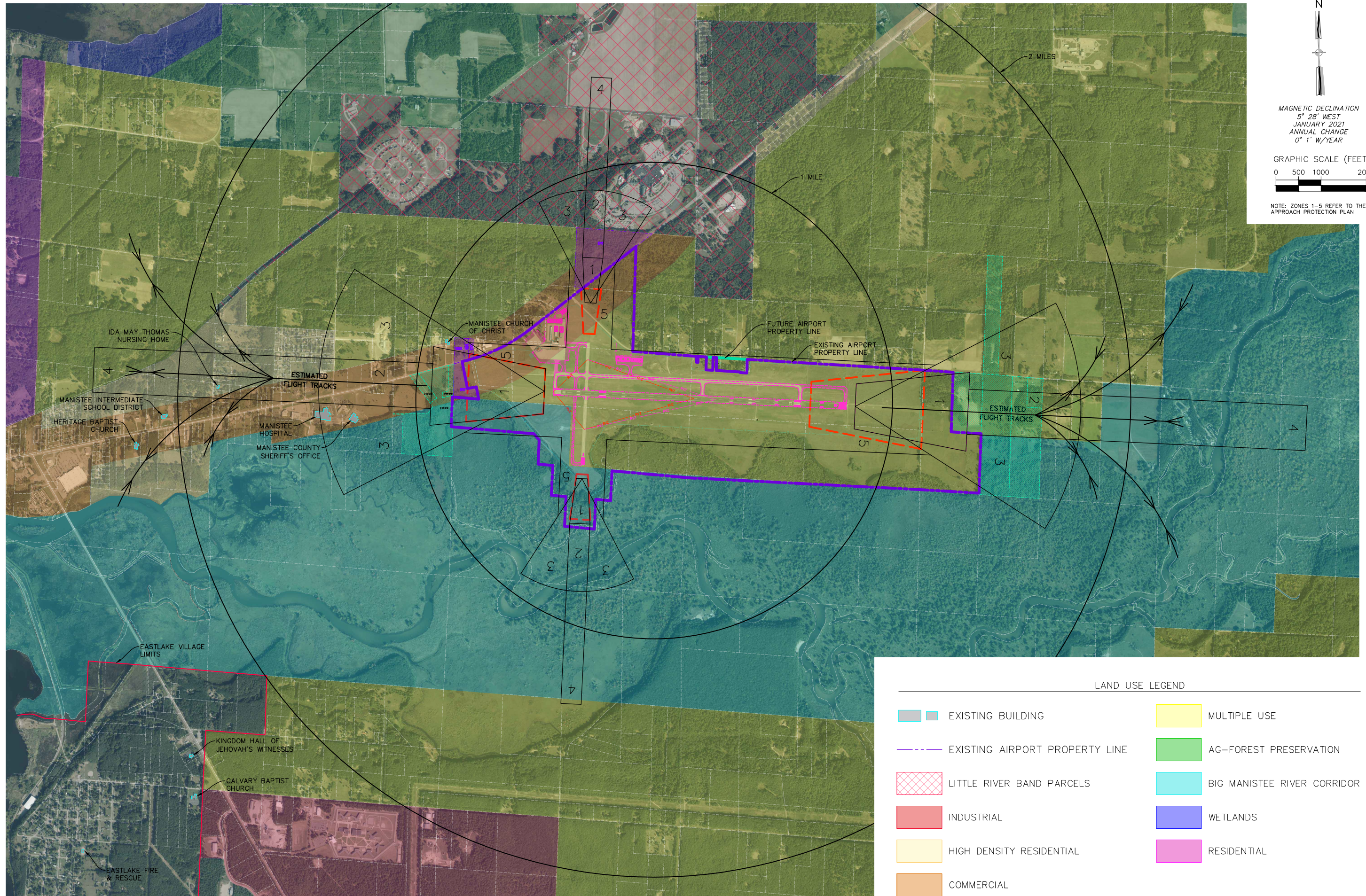
Prein & Newhof
Engineers - Surveyors - Environmental Laboratory

DRAWN: SCHREUR
DATE: 1/2021
CHECKED: VANDUINEN
DATE: 3/2021

MI SITE NO: 51-1
LOC ID: MBL

DRAWING NO. 15

NO.	REVISIONS	BY	DATE



N

MAGNETIC DECLINATION
5° 28' WEST
JANUARY 2021
ANNUAL CHANGE
0° 1' W/YEAR

GRAPHIC SCALE (FEET)
0 500 1000 2000

NOTE: ZONES 1-5 REFER TO THE
APPROACH PROTECTION PLAN

NO.	REVISIONS	BY	DATE

DRAWN	SCHREUR	CHECKED	VANDUINEN
DATE	1/2021	DATE	3/2021

Prein&Newhof
Engineering - Surveys - Environmental - Laboratory

FLYmanistee.com

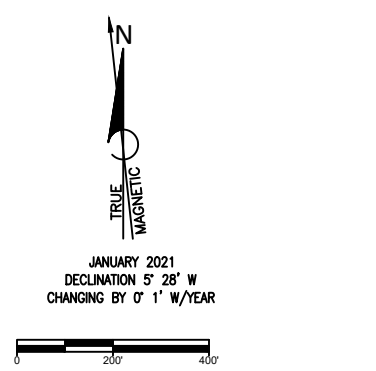
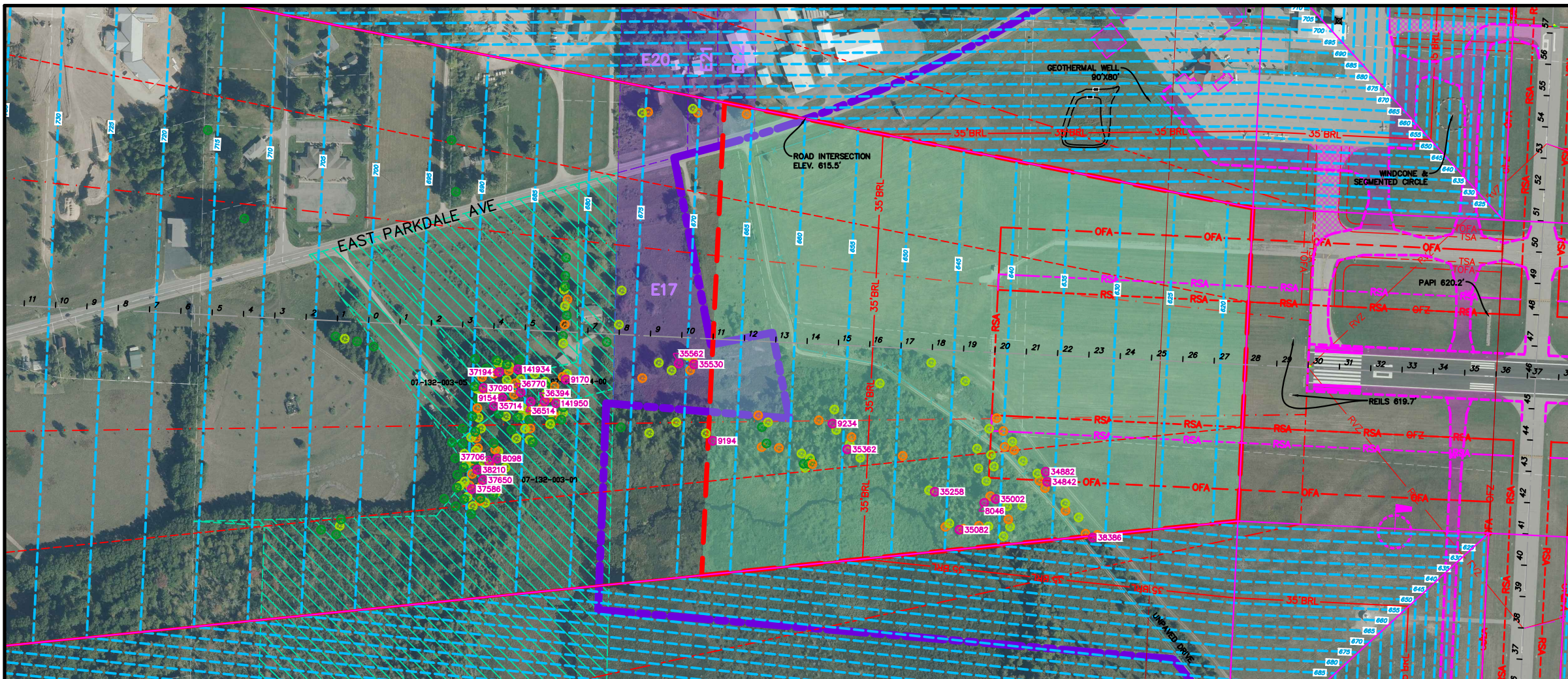
MI SITE NO
51-1
LOC ID
MBL

MANISTEE COUNTY BLACKER AIRPORT
MANISTEE, MICHIGAN
LAND USE

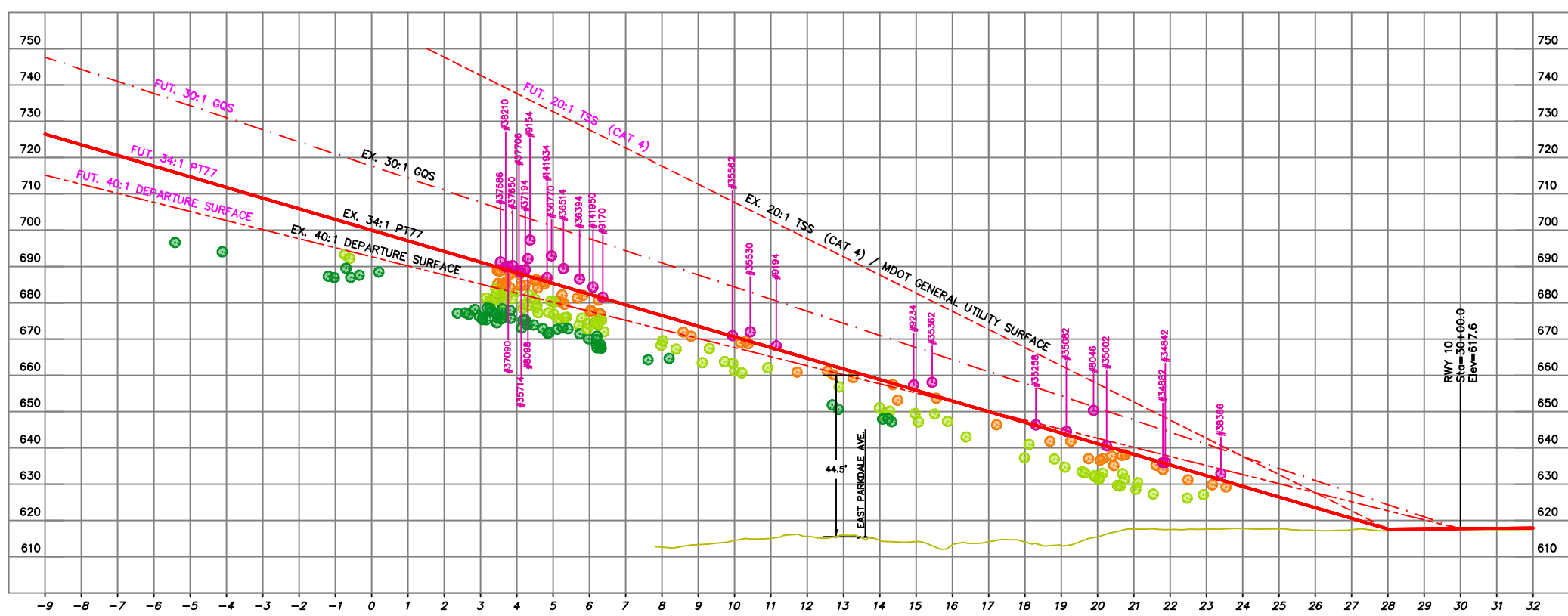
DRAWING NO.
5/15

LAND USE LEGEND	
	EXISTING BUILDING
	MULTIPLE USE
	EXISTING AIRPORT PROPERTY LINE
	AG-FOREST PRESERVATION
	LITTLE RIVER BAND PARCELS
	BIG MANISTEE RIVER CORRIDOR
	INDUSTRIAL
	WETLANDS
	HIGH DENSITY RESIDENTIAL
	RESIDENTIAL
	COMMERCIAL

I:\ONLINE PROJECTS\2020\202008_MBL_AIP_UPDATE\PROJ\05 - LAND USE\ENG - VANDUINEN - Apr. 11, 2021 - 12:29pm - Prein&Newhof



- LEGEND (EXISTING)**
- PT77 APPROACH SURFACE (PT77) ---
 - DEPARTURE SURFACE ---
 - GLIDE PATH QUALIFICATION SURFACE (GQS) ---
 - THRESHOLD SITING SURFACE (TSS) ---
 - RWY PROTECTION ZONES (RPZ) ---
 - RWY VISIBILITY ZONE (RVZ) ---
 - RWY SAFETY AREA (RSA) ---
 - OBJECT FREE AREA (OFA) ---
 - OBJECT FREE ZONE (OFZ) ---
 - PRECISION OBSTACLE FREE ZONE (POFZ) ---
 - TXY SAFETY AREA (TSA) ---
 - TXY OBJECT FREE AREA (TOFA) ---
 - 35' BLDG. RESTRICTION LINE (35' BRL) ---
 - PROPERTY LINE ---
 - AVIGATION EASEMENT ---
 - BUILDINGS ---
 - ROADS ---
 - AIRCRAFT PAVEMENT ---
 - TREES ---
 - GROUND CONTOURS ---
 - WETLAND BOUNDARY ---
 - RIVER BOUNDARY ---
 - FENCE LINE ---
 - PT77 OBSTRUCTION ●
 - WITHIN 5' PT77 OBSTRUCTION ●
 - WITHIN 10' PT77 OBSTRUCTION ●
 - PT77 AIRSPACE CONTOUR ---
- NOTE: SEE FUTURE ALP (SHEET 4) FOR FUTURE LEGEND



RUNWAY 10		RUNWAY 10 (FUTURE)	
PT77 34:1 NPI	1000'x4000'x10000'	PT77 34:1 NPI	1000'x4000'x10000'
TSS 20:1	200'x400'x3800'x10000'	TSS 20:1	400'x3400'x10000'
RPZ 1700'x1000'x1510'		RPZ 1700'x1000'x1510'	
GQS 30:1	300'x1520'x10000'	GQS 30:1	300'x1520'x10000'

Runway 10 Obstruction Table

No.	Elev.	Desc.	Longitude	Latitude	PT77 Elev.	PT77 Violation	Surface	Disposition	TSS Elev.	TSS Violation
8046	650	TREE	W086° 15' 31.46"	N044° 16' 17.66"	642	8	Approach	Remove	658	-
8098	692	TREE	W086° 15' 52.85"	N044° 16' 18.70"	687	5	Approach	Remove	746	-
9154	697	TREE	W086° 15' 52.70"	N044° 16' 20.61"	687	10	Approach	Remove	746	-
9170	682	TREE	W086° 15' 49.92"	N044° 16' 21.24"	681	1	Approach	Remove	736	-
9194	668	TREE	W086° 15' 43.42"	N044° 16' 19.41"	667	1	Approach	Remove	712	-
9234	657	TREE	W086° 15' 38.19"	N044° 16' 20.04"	656	1	Approach	Remove	693	-
34842	636	TREE	W086° 15' 28.71"	N044° 16' 18.37"	636	0	Approach	Remove	658	-
34882	636	TREE	W086° 15' 28.80"	N044° 16' 18.68"	636	0	Approach	Remove	659	-
35002	641	TREE	W086° 15' 30.96"	N044° 16' 17.79"	640	1	Approach	Remove	666	-
35082	645	TREE	W086° 15' 32.51"	N044° 16' 16.79"	644	1	Approach	Remove	672	-
35258	646	TREE	W086° 15' 33.63"	N044° 16' 17.97"	646	0	Approach	Remove	676	-
35362	658	TREE	W086° 15' 37.52"	N044° 16' 19.24"	655	3	Approach	Remove	690	-
35530	672	TREE	W086° 15' 44.32"	N044° 16' 21.81"	669	3	Approach	Remove	715	-
35562	671	TREE	W086° 15' 44.99"	N044° 16' 21.82"	671	0	Approach	Remove	718	-
35714	688	TREE	W086° 15' 53.05"	N044° 16' 20.35"	688	0	Approach	Remove	747	-
36394	687	TREE	W086° 15' 50.83"	N044° 16' 20.53"	683	4	Approach	Remove	739	-
36514	689	TREE	W086° 15' 51.44"	N044° 16' 20.51"	684	5	Approach	Remove	741	-
36770	693	TREE	W086° 15' 51.88"	N044° 16' 20.80"	685	8	Approach	Remove	743	-
37090	690	TREE	W086° 15' 53.52"	N044° 16' 20.91"	689	1	Approach	Remove	749	-
37194	689	TREE	W086° 15' 52.85"	N044° 16' 21.42"	688	1	Approach	Remove	746	-
37586	691	TREE	W086° 15' 53.92"	N044° 16' 17.72"	690	1	Approach	Remove	750	-
37650	690	TREE	W086° 15' 53.45"	N044° 16' 18.01"	689	1	Approach	Remove	748	-
37706	689	TREE	W086° 15' 53.19"	N044° 16' 18.57"	688	1	Approach	Remove	747	-
38210	690	TREE	W086° 15' 53.70"	N044° 16' 18.33"	689	1	Approach	Remove	749	-
38386	633	TREE	W086° 15' 26.67"	N044° 16' 16.65"	631	2	Approach	Remove	651	-
141934	687	TREE	W086° 15' 52.02"	N044° 16' 21.52"	686	1	Approach	Remove	743	-
141950	684	TREE	W086° 15' 50.32"	N044° 16' 20.48"	682	2	Approach	Remove	737	-

DRAWN	SCHREUR	DATE	1/2021	CHECKED	VANDUINEN
NO.	NO.	NO.	NO.	NO.	NO.
BY	BY	BY	BY	BY	BY
DATE	DATE	DATE	DATE	DATE	DATE

Prein & Newhof
 Engineers & Surveyors & Environmental Laboratory

ELY main@prein.com

M SITE NO	61-1	LOC ID	MBL
-----------	------	--------	-----

MANISTEE COUNTY BLACKER AIRPORT
 MANISTEE, MICHIGAN
 RWY 10 APPROACH PLAN PROFILE

DRAWING NO. **6/15**

I:\WORK PROJECTS\2020\20200808_MBL_ACP_FINAL_20201011_APPROACH_MBL_ACP_FINAL_11_2020.dwg - 11/20/20 - P:\chrisnewhof

Runway 28 Obstruction Table										
No.	Elev.	Desc.	Longitude	Latitude	PT77 Elev.	PT77 Violation	Surface	Disposition	TSS Elev.	TSS Violation
7503	688	TREE	W086° 13' 15.86"	N044° 16' 18.23"	684	4	Approach	Remove	714	-
7569	693	TREE	W086° 13' 24.89"	N044° 16' 23.43"	671	22	Approach	Remove	694	-
7577	695	TREE	W086° 13' 22.13"	N044° 16' 23.40"	675	20	Approach	Remove	700	-
7593	695	TREE	W086° 13' 17.73"	N044° 16' 22.61"	681	14	Approach	Remove	710	-
7601	699	TREE	W086° 13' 15.81"	N044° 16' 21.48"	684	15	Approach	Remove	714	-
7609	700	TREE	W086° 13' 14.28"	N044° 16' 19.71"	687	13	Approach	Remove	717	-
7617	700	TREE	W086° 13' 12.56"	N044° 16' 18.52"	689	11	Approach	Remove	721	-
7697	724	TREE	W086° 12' 49.05"	N044° 16' 18.96"	723	1	Approach	Remove	771	-
7713	742	TREE	W086° 12' 52.54"	N044° 16' 20.51"	718	24	Approach	Remove	764	-
7721	722	TREE	W086° 12' 55.26"	N044° 16' 20.19"	714	8	Approach	Remove	758	-
7862	711	TREE	W086° 12' 58.39"	N044° 16' 21.44"	710	1	Approach	Remove	751	-
7934	741	TREE	W086° 12' 50.42"	N044° 16' 20.06"	721	20	Approach	Remove	768	-
45119	706	TREE	W086° 13' 04.39"	N044° 16' 30.15"	700	6	Approach	Remove	738	-
45167	702	TREE	W086° 13' 04.23"	N044° 16' 29.31"	701	1	Approach	Remove	738	-
45447	723	TREE	W086° 12' 50.25"	N044° 16' 25.16"	721	2	Approach	Remove	768	-
45511	730	TREE	W086° 12' 52.11"	N044° 16' 23.92"	719	11	Approach	Remove	764	-
45831	724	TREE	W086° 12' 53.23"	N044° 16' 22.98"	717	7	Approach	Remove	762	-
45983	725	TREE	W086° 12' 50.68"	N044° 16' 22.61"	721	4	Approach	Remove	768	-
46551	716	TREE	W086° 12' 55.15"	N044° 16' 21.79"	714	2	Approach	Remove	758	-
46735	715	TREE	W086° 12' 55.56"	N044° 16' 20.26"	714	1	Approach	Remove	757	-
46999	730	TREE	W086° 12' 51.96"	N044° 16' 19.17"	719	11	Approach	Remove	765	-
47687	719	TREE	W086° 12' 52.34"	N044° 16' 17.16"	719	0	Approach	Remove	764	-
47775	699	TREE	W086° 13' 10.85"	N044° 16' 10.11"	692	7	Approach	Remove	725	-
47783	710	TREE	W086° 13' 08.71"	N044° 16' 10.70"	695	15	Approach	Remove	730	-
47799	701	TREE	W086° 13' 06.36"	N044° 16' 10.23"	699	2	Approach	Remove	735	-
47823	703	TREE	W086° 13' 06.08"	N044° 16' 09.61"	699	4	Approach	Remove	736	-
47847	711	TREE	W086° 13' 06.63"	N044° 16' 09.50"	698	13	Approach	Remove	734	-
47863	710	TREE	W086° 13' 06.67"	N044° 16' 09.22"	698	12	Approach	Remove	734	-
48335	706	TREE	W086° 13' 00.85"	N044° 16' 26.70"	706	0	Approach	Remove	745	-
48879	716	TREE	W086° 13' 00.52"	N044° 16' 25.73"	706	10	Approach	Remove	746	-
49647	705	TREE	W086° 13' 01.64"	N044° 16' 24.66"	705	0	Approach	Remove	744	-
50407	701	TREE	W086° 13' 04.31"	N044° 16' 24.18"	701	0	Approach	Remove	738	-
50639	699	TREE	W086° 13' 06.59"	N044° 16' 25.63"	697	2	Approach	Remove	733	-
51279	713	TREE	W086° 13' 03.48"	N044° 16' 25.69"	702	11	Approach	Remove	740	-
51535	704	TREE	W086° 13' 02.81"	N044° 16' 26.69"	703	1	Approach	Remove	741	-
52551	714	TREE	W086° 13' 01.77"	N044° 16' 25.60"	704	10	Approach	Remove	744	-
53631	702	TREE	W086° 13' 06.18"	N044° 16' 12.05"	699	3	Approach	Remove	735	-
54087	708	TREE	W086° 13' 05.54"	N044° 16' 12.81"	700	8	Approach	Remove	736	-
54375	691	TREE	W086° 13' 15.96"	N044° 16' 20.56"	684	7	Approach	Remove	714	-
55031	680	TREE	W086° 13' 22.04"	N044° 16' 21.49"	675	5	Approach	Remove	701	-
55335	674	TREE	W086° 13' 22.96"	N044° 16' 21.58"	674	0	Approach	Remove	699	-
55615	676	TREE	W086° 13' 24.12"	N044° 16' 20.80"	672	4	Approach	Remove	696	-
55775	672	TREE	W086° 13' 24.48"	N044° 16' 21.71"	672	0	Approach	Remove	695	-
55927	676	TREE	W086° 13' 24.53"	N044° 16' 22.14"	672	4	Approach	Remove	695	-
56183	678	TREE	W086° 13' 25.09"	N044° 16' 23.26"	671	7	Approach	Remove	694	-
56335	671	TREE	W086° 13' 24.72"	N044° 16' 23.76"	671	0	Approach	Remove	695	-
56655	671	TREE	W086° 13' 25.13"	N044° 16' 25.00"	671	0	Approach	Remove	694	-
56711	707	TREE	W086° 13' 19.18"	N044° 16' 28.26"	679	28	Approach	Remove	706	1
57167	689	TREE	W086° 13' 20.82"	N044° 16' 25.46"	677	12	Approach	Remove	703	-
57431	687	TREE	W086° 13' 14.58"	N044° 16' 19.19"	686	1	Approach	Remove	717	-
57983	689	TREE	W086° 13' 12.91"	N044° 16' 18.50"	689	0	Approach	Remove	720	-
58143	692	TREE	W086° 13' 11.61"	N044° 16' 18.13"	691	1	Approach	Remove	723	-
58255	690	TREE	W086° 13' 12.69"	N044° 16' 17.88"	689	1	Approach	Remove	721	-
58463	691	TREE	W086° 13' 12.04"	N044° 16' 18.82"	690	1	Approach	Remove	722	-
58703	690	TREE	W086° 13' 12.53"	N044° 16' 19.21"	689	1	Approach	Remove	721	-
59255	690	TREE	W086° 13' 13.73"	N044° 16' 20.32"	687	3	Approach	Remove	718	-
59865	686	TREE	W086° 13' 15.61"	N044° 16' 21.88"	685	1	Approach	Remove	714	-
60409	689	TREE	W086° 13' 21.75"	N044° 16' 24.10"	675	14	Approach	Remove	701	-
60433	683	TREE	W086° 13' 19.89"	N044° 16' 24.43"	678	5	Approach	Remove	705	-
60529	675	TREE	W086° 13' 22.46"	N044° 16' 25.08"	674	1	Approach	Remove	699	-
60769	685	TREE	W086° 13' 15.53"	N044° 16' 25.89"	684	1	Approach	Remove	714	-
60825	690	TREE	W086° 13' 13.28"	N044° 16' 27.29"	688	2	Approach	Remove	719	-
60905	689	TREE	W086° 13' 13.12"	N044° 16' 25.93"	688	1	Approach	Remove	719	-
61041	693	TREE	W086° 13' 11.47"	N044° 16' 26.26"	690	3	Approach	Remove	723	-
61145	692	TREE	W086° 13' 11.16"	N044° 16' 27.45"	691	1	Approach	Remove	723	-
61657	678	TREE	W086° 13' 24.14"	N044° 16' 25.51"	672	6	Approach	Remove	696	-
61761	695	TREE	W086° 13' 23.94"	N044° 16' 24.43"	672	23	Approach	Remove	696	-
62969	680	TREE	W086° 13' 22.17"	N044° 16' 22.37"	675	5	Approach	Remove	700	-

Runway 28 Obstruction Table (Cont.)										
No.	Elev.	Desc.	Longitude	Latitude	PT77 Elev.	PT77 Violation	Surface	Disposition	TSS Elev.	TSS Violation
64185	687	TREE	W086° 13' 16.45"	N044° 16' 21.66"	683	4	Approach	Remove	712	-
65249	687	TREE	W086° 13' 15.60"	N044° 16' 19.87"	685	2	Approach	Remove	714	-
65289	688	TREE	W086° 13' 13.96"	N044° 16' 19.45"	687	1	Approach	Remove	718	-
65985	717	TREE	W086° 12' 53.99"	N044° 16' 24.73"	716	1	Approach	Remove	760	-
142120	698	TREE	W086° 13' 15.12"	N044° 16' 20.53"	685	13	Approach	Remove	715	-
142184	685	TREE	W086° 13' 16.29"	N044° 16' 23.15"	683	2	Approach	Remove	713	-
142200	695	TREE	W086° 13' 18.56"	N044° 16' 22.56"	680	15	Approach	Remove	708	-
142216	698	TREE	W086° 13' 23.03"	N044° 16' 23.06"	674	24	Approach	Remove	698	-
142248	679	TREE	W086° 13' 20.74"	N044° 16' 22.32"	677	2	Approach	Remove	703	-
142256	689	TREE	W086° 13' 19.28"	N044° 16' 22.56"	679	10	Approach	Remove	706	-
142360	731	TREE	W086° 12' 49.51"	N044° 16' 19.74"	723	8	Approach	Remove	770	-
142376	720	TREE	W086° 12' 53.54"	N044° 16' 18.35"	717	3	Approach	Remove	762	-
142408	734	TREE	W086° 12' 54.07"	N044° 16' 21.13"	716	18	Approach	Remove	760	-

NO.	REVISIONS	BY	DATE

DRAWN	SCHREUR
DATE	1/2021
CHECKED	VANDUINEN
DATE	3/2021

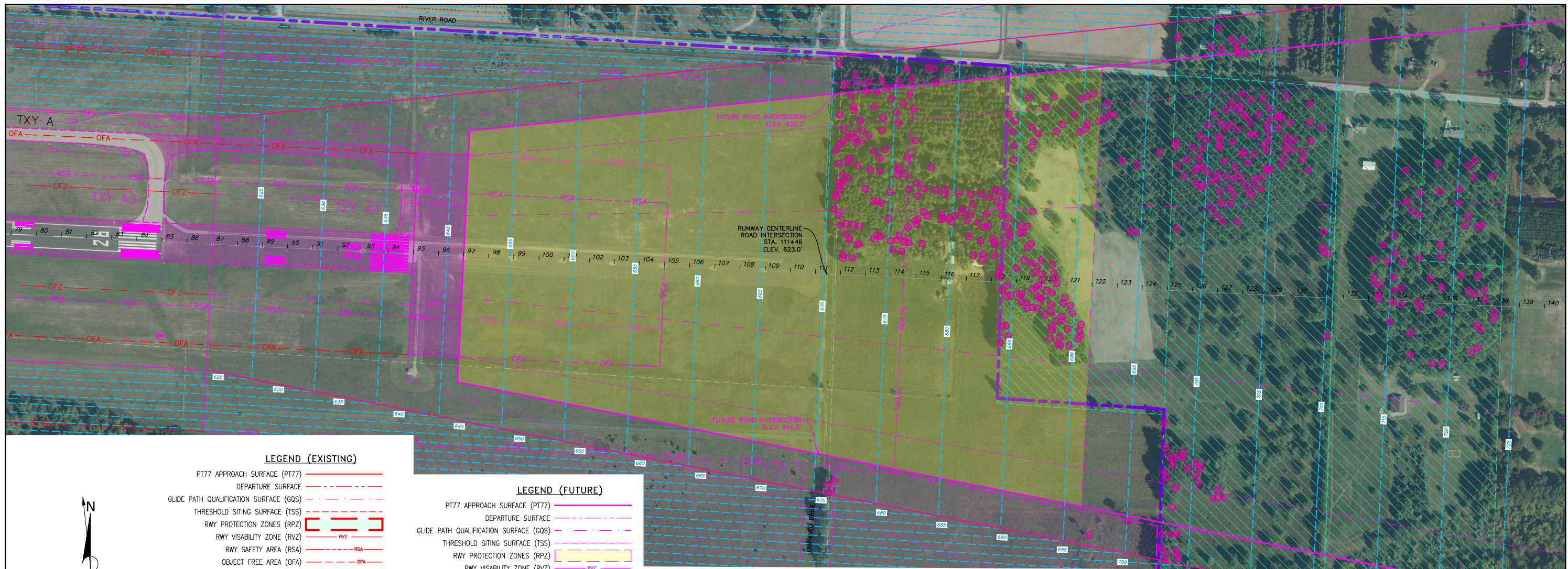
Prein & Newhof
 Engineers - Surveyors - Environmental Laboratory



M SITE NO	61-1
LOC ID	MBL

MANISTEE COUNTY BLACKER AIRPORT
 MANISTEE, MICHIGAN
RWY 28 APPROACH OBSTRUCTION TABLE

DRAWING NO.	8/15
-------------	------



LEGEND (EXISTING)

- PT77 APPROACH SURFACE (PT77) ———
- DEPARTURE SURFACE ———
- GLIDE PATH QUALIFICATION SURFACE (GQS) ———
- THRESHOLD SITING SURFACE (TSS) ———
- RWY PROTECTION ZONES (RPZ)
- RWY VISABILITY ZONE (RVZ)
- RWY SAFETY AREA (RSA)
- OBJECT FREE AREA (OFA)
- OBJECT FREE ZONE (OFZ)
- PRECISION OBSTACLE FREE ZONE (POFZ)
- TXY SAFETY AREA (TSA)
- TXY OBJECT FREE AREA (TOFA)
- 35' BLDG. RESTRICTION LINE (35' BRL)
- PROPERTY LINE
- AVIGATION EASEMENT
- BUILDINGS
- ROADS
- AIRCRAFT PAVEMENT
- TREES
- GROUND CONTOURS
- WETLAND BOUNDARY
- RIVER BOUNDARY
- FENCE LINE
- PT77 OBSTRUCTION
- WITHIN 5' PT77 OBSTRUCTION
- WITHIN 10' PT77 OBSTRUCTION
- PT77 AIRSPACE CONTOUR

LEGEND (FUTURE)

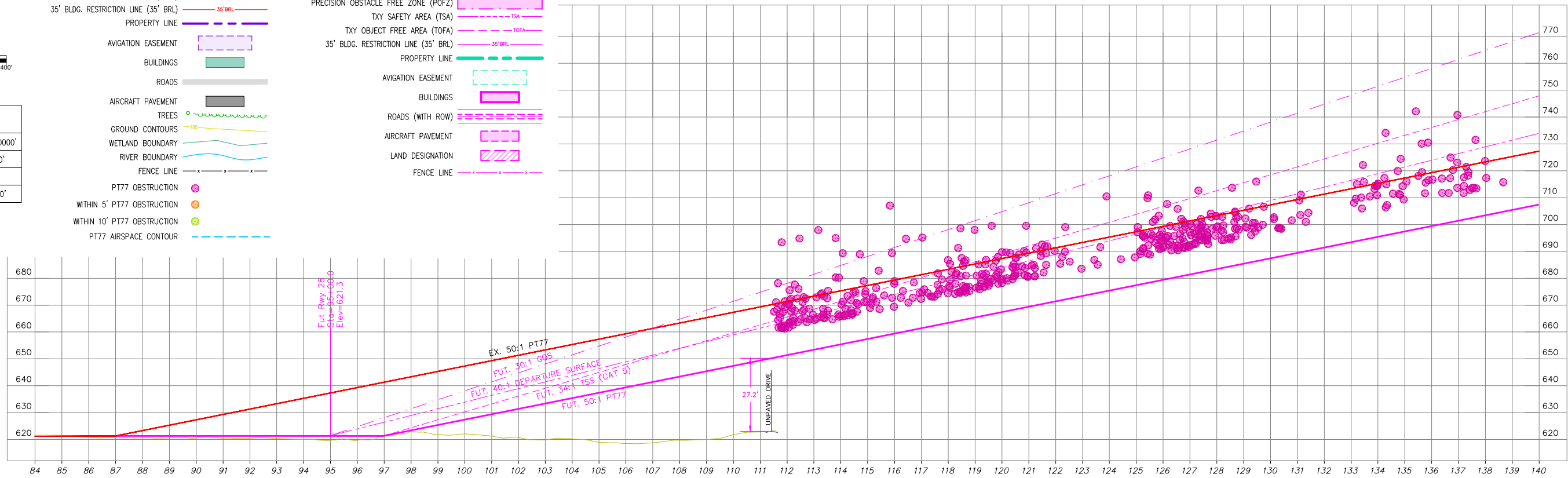
- PT77 APPROACH SURFACE (PT77) ———
- DEPARTURE SURFACE ———
- GLIDE PATH QUALIFICATION SURFACE (GQS) ———
- THRESHOLD SITING SURFACE (TSS) ———
- RWY PROTECTION ZONES (RPZ)
- RWY VISABILITY ZONE (RVZ)
- RWY SAFETY AREA (RSA)
- OBJECT FREE AREA (OFA)
- OBJECT FREE ZONE (OFZ)
- PRECISION OBSTACLE FREE ZONE (POFZ)
- TXY SAFETY AREA (TSA)
- TXY OBJECT FREE AREA (TOFA)
- 35' BLDG. RESTRICTION LINE (35' BRL)
- PROPERTY LINE
- AVIGATION EASEMENT
- BUILDINGS
- ROADS (WITH ROW)
- AIRCRAFT PAVEMENT
- LAND DESIGNATION
- FENCE LINE

NOTE: NEARLY ALL THE TREES IN THE APPROACH WILL BE OBSTRUCTIONS FOR THE FUTURE RUNWAY EXTENSION. NO OBSTRUCTION TABLE IS SHOWN. NEW SURVEY DATA SHOULD BE OBTAINED PRIOR TO THE RUNWAY EXTENSION.

JANUARY 2021
DECLINATION 5° 28' W
CHANGING BY 0' 1" W/YEAR



RUNWAY 28 (FUTURE)	
PT77	50:1 PI 50000'x1000'x50000'
TSS	34:1 400'x3400'x10000'
RPZ	1700'x1000'x1510'
GQS	30:1 300'x1520'x10000'



NO.	REVISIONS	BY	DATE

DRAWN	SCHREUR
DATE	1/2021
CHECKED	VANDUINEN
DATE	3/2021

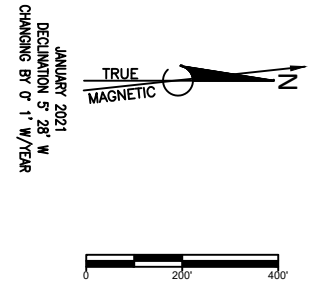
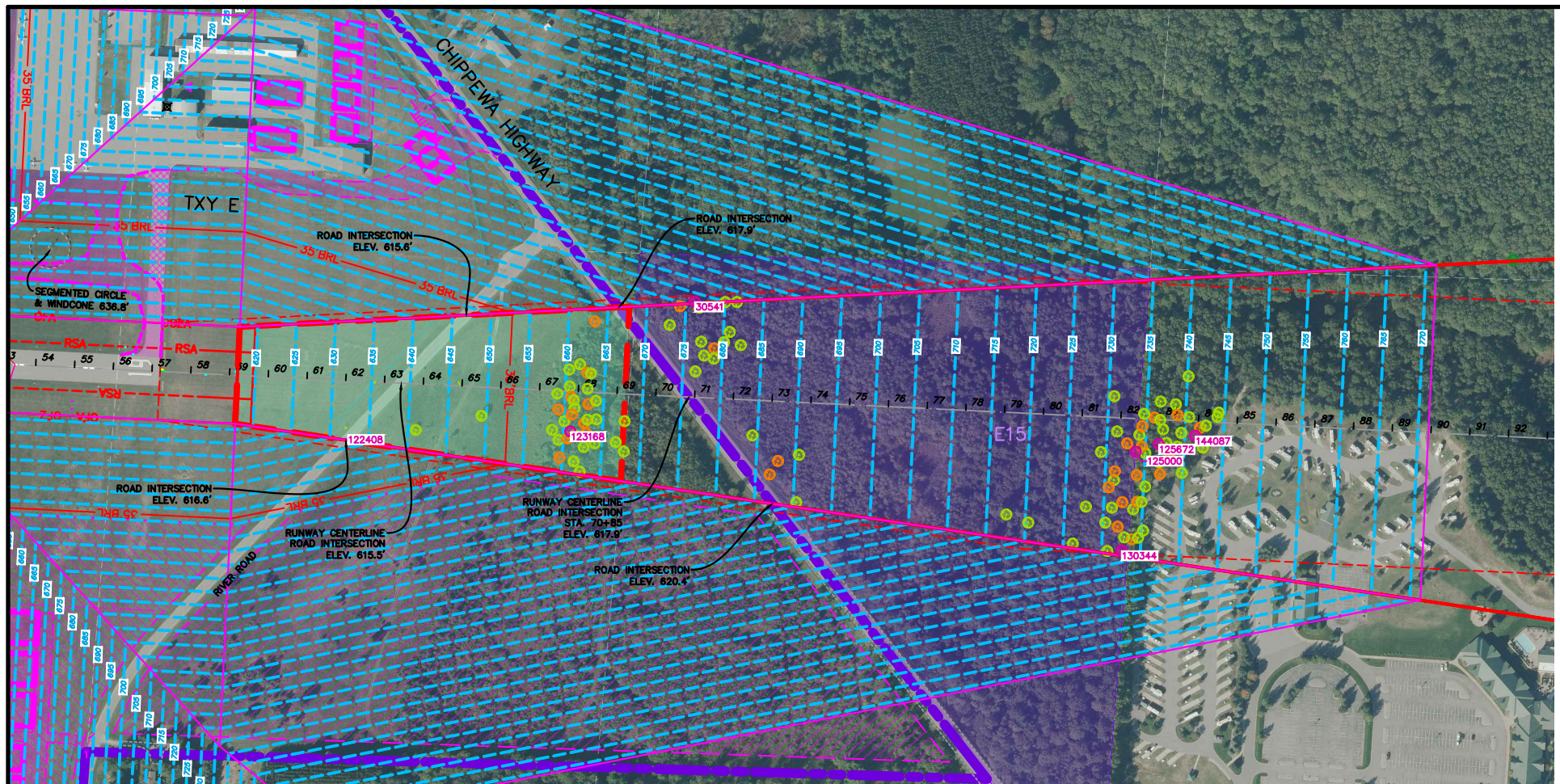
Prein&Newhof
Engineers - Surveyors - Environmental Laboratory

FLYmanitace.com

MI SITE NO	51-1
LOC ID	MBL

MANISTEE COUNTY BLACKER AIRPORT
MANISTEE, MICHIGAN
FUTURE RWY 28 APPROACH PLAN PROFILE

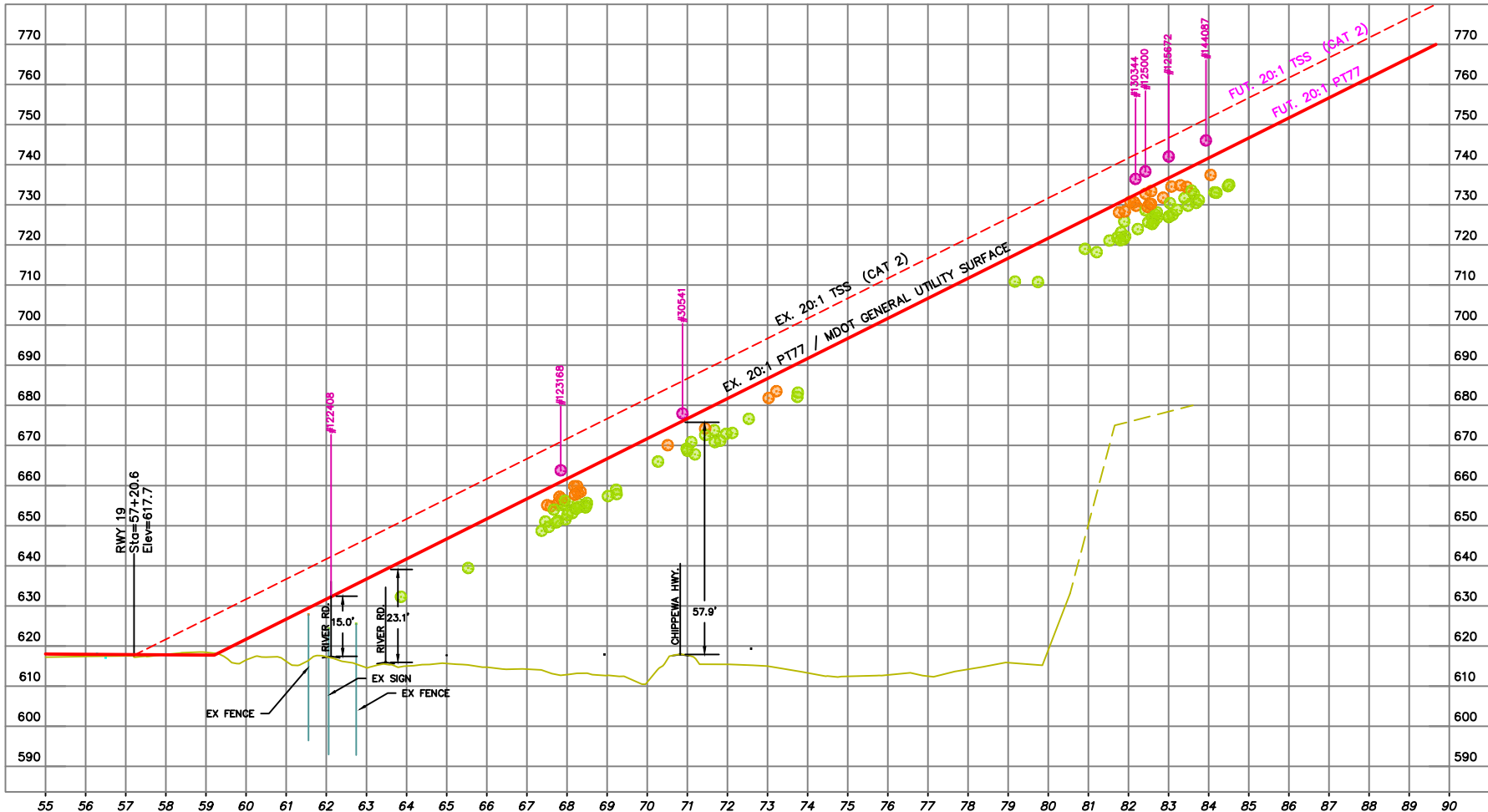
DRAWING NO. **9/15**



- ### LEGEND (EXISTING)
- PT77 APPROACH SURFACE (PT77) ---
 - DEPARTURE SURFACE ---
 - GLIDE PATH QUALIFICATION SURFACE (GQS) ---
 - THRESHOLD SITING SURFACE (TSS) ---
 - RWY PROTECTION ZONES (RPZ) ---
 - RWY VISABILITY ZONE (RVZ) ---
 - RWY SAFETY AREA (RSA) ---
 - OBJECT FREE AREA (OFA) ---
 - OBJECT FREE ZONE (OFZ) ---
 - PRECISION OBSTACLE FREE ZONE (POFZ) ---
 - TXY SAFETY AREA (TSA) ---
 - TXY OBJECT FREE AREA (TOFA) ---
 - 35' BLDG. RESTRICTION LINE (35' BRL) ---
 - PROPERTY LINE ---
 - AVIGATION EASEMENT ---
 - BUILDINGS ---
 - ROADS ---
 - AIRCRAFT PAVEMENT ---
 - TREES ---
 - GROUND CONTOURS ---
 - WETLAND BOUNDARY ---
 - RIVER BOUNDARY ---
 - FENCE LINE ---
 - PT77 OBSTRUCTION ●
 - WITHIN 5' PT77 OBSTRUCTION ○
 - WITHIN 10' PT77 OBSTRUCTION ○
 - PT77 AIRSPACE CONTOUR ---

RUNWAY 19	
PT77 20:1	WS 250'x1250'x5000'
TSS 20:1	250'x700'x2250'x2750'
RPZ	1000'x250'450'

- ### LEGEND (FUTURE)
- PT77 APPROACH SURFACE (PT77) ---
 - DEPARTURE SURFACE ---
 - GLIDE PATH QUALIFICATION SURFACE (GQS) ---
 - THRESHOLD SITING SURFACE (TSS) ---
 - RWY PROTECTION ZONES (RPZ) ---
 - RWY VISABILITY ZONE (RVZ) ---
 - RWY SAFETY AREA (RSA) ---
 - OBJECT FREE AREA (OFA) ---
 - OBJECT FREE ZONE (OFZ) ---
 - PRECISION OBSTACLE FREE ZONE (POFZ) ---
 - TXY SAFETY AREA (TSA) ---
 - TXY OBJECT FREE AREA (TOFA) ---
 - 35' BLDG. RESTRICTION LINE (35' BRL) ---
 - PROPERTY LINE ---
 - AVIGATION EASEMENT ---
 - BUILDINGS ---
 - ROADS (WITH ROW) ---
 - AIRCRAFT PAVEMENT ---
 - LAND DESIGNATION ---
 - FENCE LINE ---



Runway 19 Obstruction Table

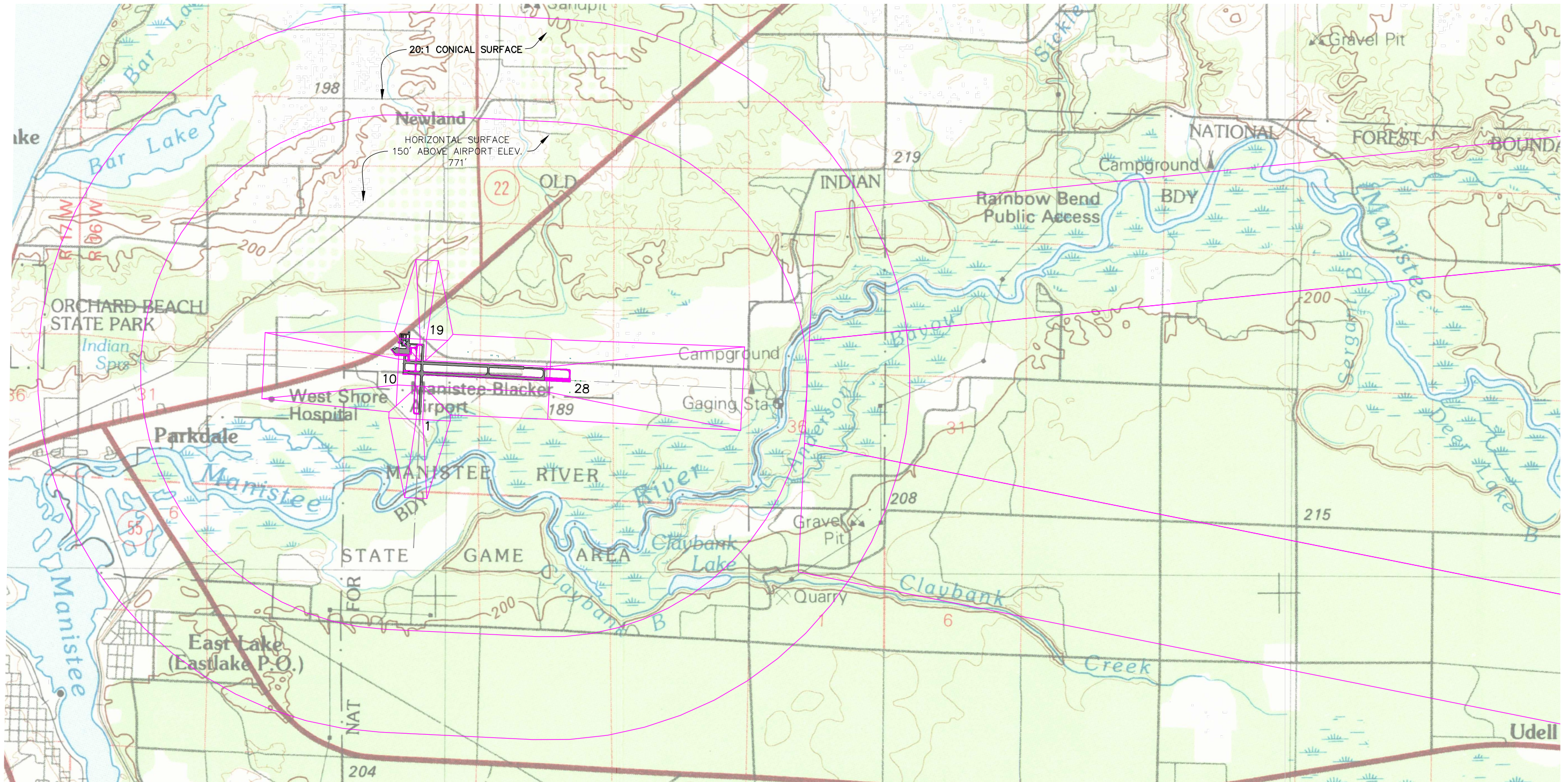
No.	Elev.	Desc.	Longitude	Latitude	PT77 Elev.	PT77 Violation	Surface	Disposition	TSS Elev.	TSS Violation
30541	678	TREE	W086° 15' 09.95"	N044° 16' 46.64"	676	2	Approach	Remove	686	-
122408	632	PRIMA	W086° 15' 04.80"	N044° 16' 37.89"	632	0	Approach	Remove	642	-
123168	664	TREE	W086° 15' 05.26"	N044° 16' 43.55"	661	3	Approach	Remove	671	-
125000	738	TREE	W086° 15' 05.00"	N044° 16' 57.95"	734	4	Approach	Remove	744	-
125672	742	TREE	W086° 15' 05.29"	N044° 16' 58.53"	737	5	Approach	Remove	747	-
130344	736	TREE	W086° 15' 01.49"	N044° 16' 57.64"	733	3	Approach	Remove	743	-
144087	746	TREE	W086° 15' 05.61"	N044° 16' 59.45"	741	5	Approach	Remove	751	-

DRAWN: SCHREUR
 DATE: 1/2021
 CHECKED: VANDUINEN
 DATE: 3/2021

NO. _____
 REVISIONS _____
 BY _____
 DATE _____

M SITE NO: 61-1
 LOC ID: MBL

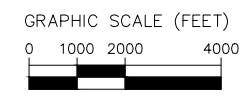
MANISTEE COUNTY BLACKER AIRPORT
 MANISTEE, MICHIGAN
 RWY 19 APPROACH PLAN PROFILE



E:\WORK\PROJECTS\2020\202008\MBL_AIRSPACE\DRAWING_75.PLT - P777.FLA - 12:50pm - 1/2/2021 - P:\MANISTEE - JAVANDIEN - AUG 11 2021 - 12:50pm - P:\MANISTEE



MAGNETIC DECLINATION
5° 28' WEST
JANUARY 2021
ANNUAL CHANGE
0° 1' W/YEAR

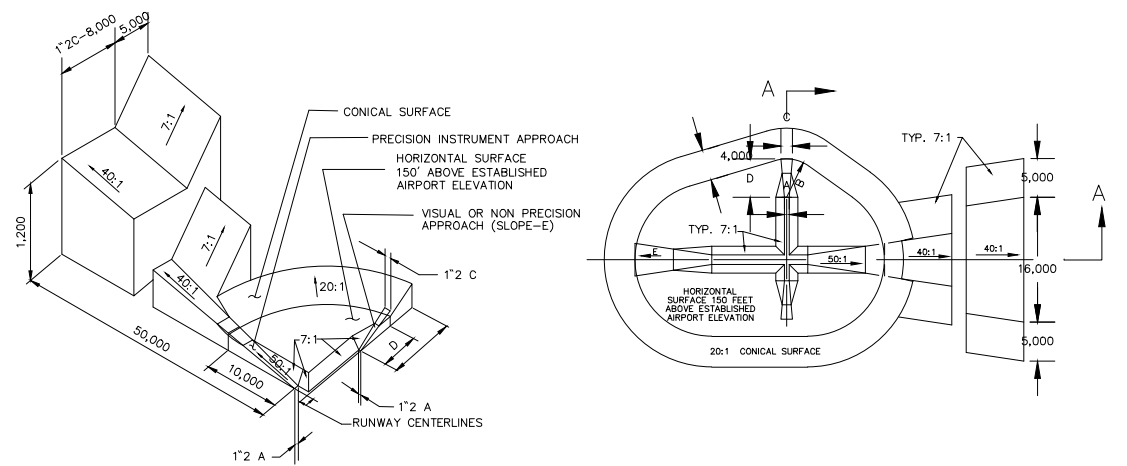


DIM	ITEM	DIMENSIONAL STANDARDS (FEET)					
		VISUAL RUNWAY		NON-PRECISION INSTRUMENT RUNWAY			PRECISION INSTRUMENT RUNWAY
A	WIDTH OF PRIMARY SURFACE AND APPROACH SURFACE WIDTH AT INNER END	250	500	500	500	1,000	1,000
B	RADIUS OF HORIZONTAL SURFACE	5,000	5,000	5,000	10,000	10,000	10,000
C	APPROACH SURFACE WIDTH AT END	1,250	1,500	2,000	3,500	4,000	16,000
D	APPROACH SURFACE LENGTH	5,000	5,000	5,000	10,000	10,000	*
E	APPROACH SLOPE	20:1	20:1	20:1	34:1	34:1	*

A- UTILITY RUNWAYS
B- RUNWAYS LARGER THAN UTILITY
C- VISIBILITY MINIMUMS GREATER THAN 3/4 MILE
D- VISIBILITY MINIMUMS AS LOW AS 3/4 MILE
* PRECISION INSTRUMENT APPROACH SLOPE IS 50:1 FOR INNER 10,000 FEET AND 40:1 FOR AN ADDITIONAL 40,000 FEET

MBL AIRPORT DATA	
ESTABLISHED AIRPORT ELEVATION	621.6'
EXISTING AIRPORT REFERENCE POINT	
LATITUDE	N044°16'20.90"
LONGITUDE	W086°14'48.80"

- OBSTRUCTIONS, CLEARANCES, AND LOCATIONS ARE CALCULATED FROM ULTIMATE RUNWAY END ELEVATIONS AND ULTIMATE APPROACH SURFACES, UNLESS OTHERWISE NOTED. ADDITIONAL OBSTRUCTION DATA IS ILLUSTRATED ON AERONAUTICAL DATA SHEET (ADS) NATIONAL GEODETIC SURVEY (NGS) ADSN4425 AND NATIONAL OCEAN SURVEY (NOS) DOCUMENT (ODS) OC 425, AIRPORT OBSTRUCTION CHART (MAY 1995).
- DEPICTION OF FEATURES AND OBJECTS WITHIN THE 14 CFR PART 77 PRIMARY, TRANSITIONAL, HORIZONTAL, CONICAL APPROACH SURFACES, IS ILLUSTRATED ON THE AIRPORT AIRSPACE DRAWINGS, THIS SHEET.
- DEPICTION OF FEATURES AND OBJECTS WITHIN THE INNER PORTION OF THE APPROACH SURFACES, IS ILLUSTRATED ON THE INNER PORTION OF RUNWAY APPROACH SURFACE DRAWINGS, SHEETS 6, 7, 8, 9 & 10.
- NO LOCAL ZONING ORDINANCES ARE IN EFFECT.
- SURVEY IS FROM AERIAL MAPPING DATED SEPT. 4, 2020.



NO.	REVISIONS	BY	DATE

DRAWN	SCHREUR	DATE	CHECKED	VANDUINEN	DATE
		1/2021			3/2021

Prein & Newhof
Engineers - Surveyors - Environmental Laboratory

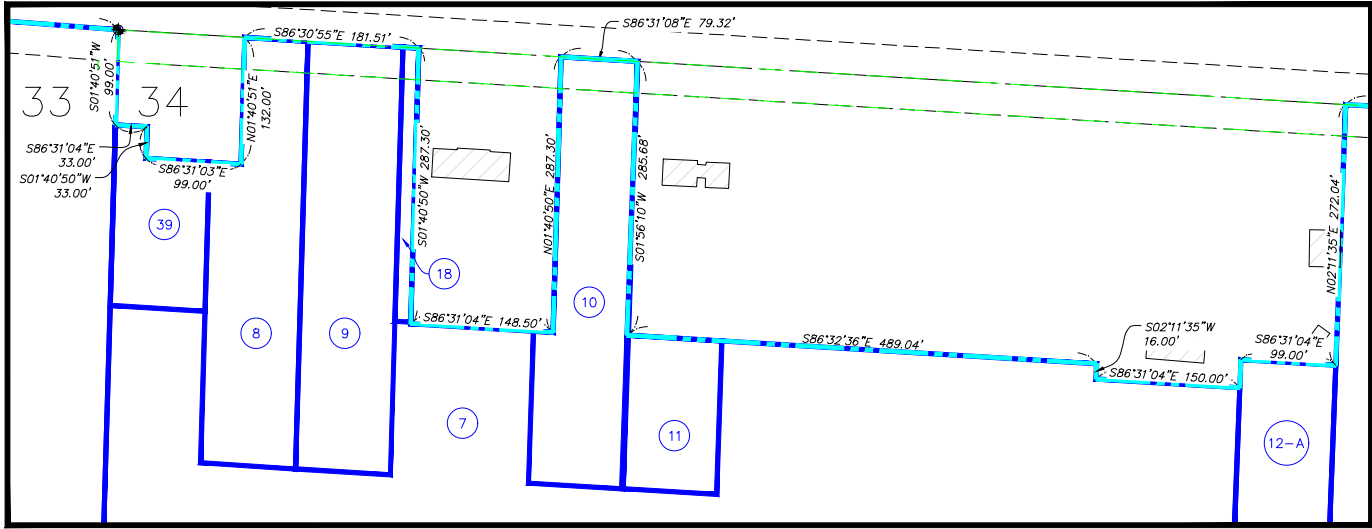
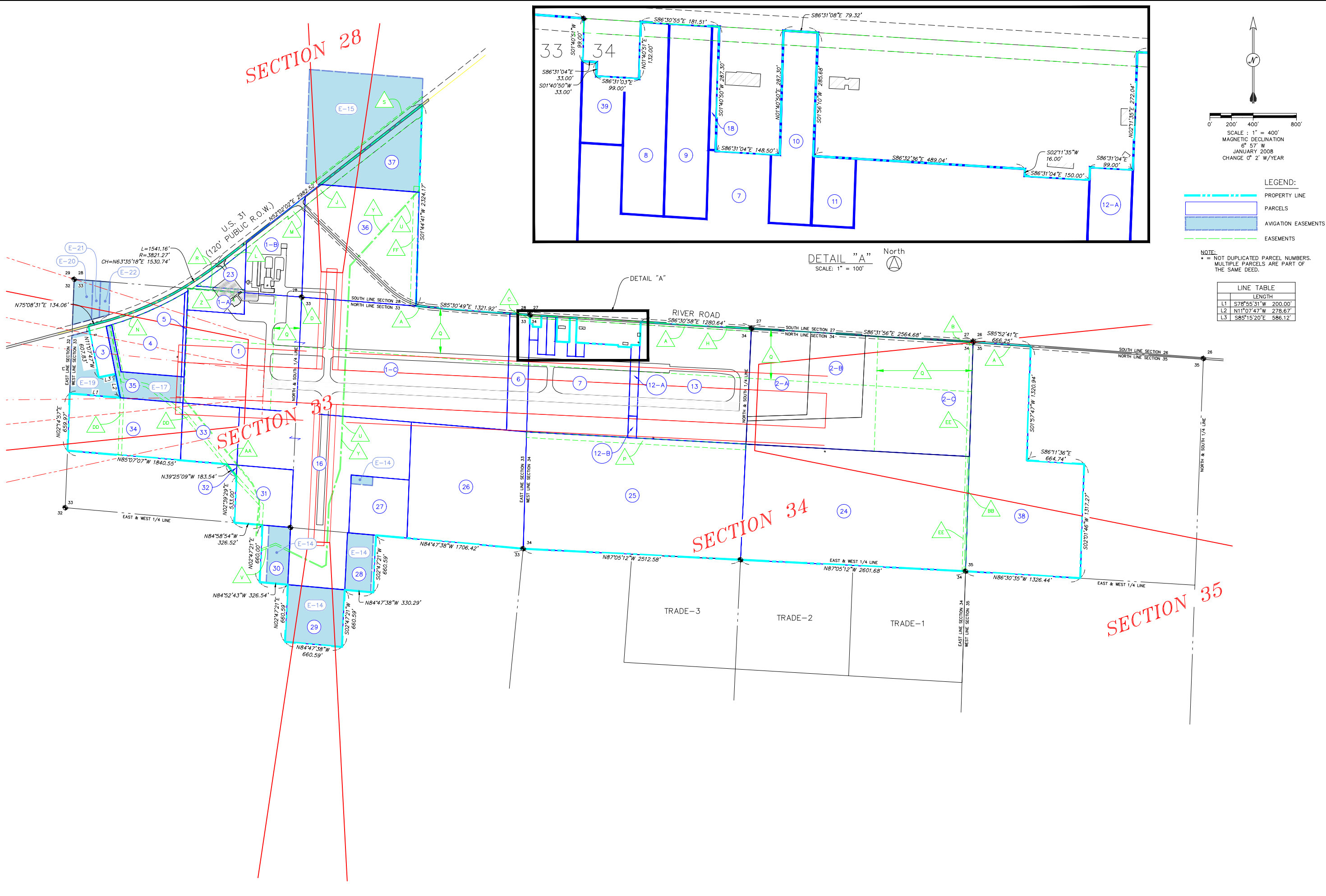
FLYmanistee.com

MI SITE NO	51-1
LOC ID	MBL

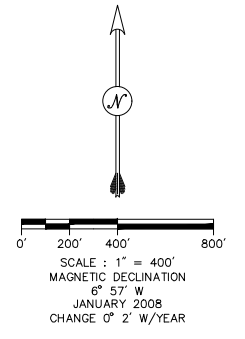
MANISTEE COUNTY BLACKER AIRPORT
MANISTEE, MICHIGAN
FAR PART 77 AIRSPACE DRAWING

DRAWING NO. 73/75

I:\CADD\PROJECTS\2020\202008_MBL_JP\IP\NETL_SVRVRS_CDRFT_A_2022.DWG - ANNOTATED - JG_26_2024 - 03:59pm - Prein&Newhof



DETAIL "A"
SCALE: 1" = 100'



LEGEND:
 PROPERTY LINE
 PARCELS
 AVIGATION EASEMENTS
 EASEMENTS

NOTE:
 * = NOT DUPLICATED PARCEL NUMBERS. MULTIPLE PARCELS ARE PART OF THE SAME DEED.

LINE TABLE	
	LENGTH
L1	S78°55'31"W 200.00'
L2	N11°07'47"W 278.67'
L3	S85°15'20"E 586.12'

NO.	REVISIONS	BY	DATE

DRAWN	SCHREUR	CHECKED	VANDUINEN

Prein&Newhof
 Engineers - Surveyors - Environmental - Laboratory

FLYmanitsee.com

MI SITE NO	51-1
LOC ID	MBL

MANISTEE COUNTY BLACKER AIRPORT
 MANISTEE, MICHIGAN
 PROPERTY PLAN

DRAWING NO.
 14/15

PARCELS								
PARCELS	FAA GRANT	GRANTOR	GRANTEE	INSTRUMENT	ACREAGE	LIBER	PAGE	DATE
1	---	PETOSKEY	CITY	WARRANTY	36.32	109	270	1930-01-28
1-A	9-20-059-7004	COWEN	CITY/COUNTY	WARRANTY	3.78	286	66	1968-08-12
1-B	---	PETOSKEY	CITY	WARRANTY	13.30	109	270	1930-01-28
1-C	---	KOLK	CITY	WARRANTY	74.50	114	202	1929-12-26
2-A	9-20-059-C603	MALMGREN	CITY/COUNTY	WARRANTY	15.57	265	144	1965-06-02
2-B	9-20-059-7004	MALMGREN	CITY/COUNTY	WARRANTY	15.00	265	144	1965-06-02
2-C	9-20-059-7004	MALMGREN	CITY/COUNTY	WARRANTY	48.05	265	144	1965-06-02
3	9-20-059-7004	KRUSE	CITY/COUNTY	WARRANTY	2.55	286	81	1968-11-04
4	9-20-059-5701	CHRISTIANSEN	CITY/COUNTY	WARRANTY	13.09	195	225	1957-04-29
5	9-20-059-5701	MDNR	CITY/COUNTY	DEED	0.75	201	8	1958-04-16
6	9-20-059-5701	SEGGIE	CITY/COUNTY	WARRANTY	7.22	195	237	1957-04-15
7	9-20-059-5701	SCHUDLICH	CITY/COUNTY	WARRANTY	27.09	221	212	1960-07-29
8	9-20-059-5701	BARRON	CITY/COUNTY	WARRANTY	0.91	195	220	1957-04-13
9	9-20-059-5701	BARRON	CITY/COUNTY	WARRANTY	1.01	195	222	1957-04-15
10	9-20-059-5701	COOPER	CITY/COUNTY	WARRANTY	0.87	195	227	1957-04-09
11	9-20-059-7004	JANKWIETZ	CITY/COUNTY	WARRANTY	0.36	233	253	1961-11-24
12-A	9-20-059-C603	BATHKE	CITY/COUNTY	WARRANTY	1.87	269	819	1966-06-05
12-B	9-20-059-C603	BATHKE	CITY/COUNTY	WARRANTY	0.57	269	819	1966-06-05
13	9-20-059-C603	BACON	CITY/COUNTY	WARRANTY	39.21	265	165	1965-08-05
16	8-26-0059-02	MDNR	CITY/COUNTY	DEED	50.82	345	527	1976-07-12
18	9-20-059-5701	SCHUDLICH	CITY/COUNTY	WARRANTY	0.11	195	231	1957-06-11
23	6-26-0059-04	THORIN	CITY	WARRANTY	4.58	385	126	1979-12-21
24	---	COURT	COUNTY	CONDEMNATION	79.19	699	684	1998-10-16
25	---	COURT	COUNTY	CONDEMNATION	77.85	699	682	1998-08-20
26	---	COURT	COUNTY	CONDEMNATION	41.39	699	680	1998-08-20
27	LAND EXCHANGE	MINDR	MBL	QUIT CLAIM	10.32	933	7	2004-12-05
28	LAND EXCHANGE	MINDR	MBL	QUIT CLAIM	5.00	933	7	2004-12-06
29	LAND EXCHANGE	MINDR	MBL	QUIT CLAIM	10.01	933	7	2004-12-07
30	LAND EXCHANGE	MINDR	MBL	QUIT CLAIM	4.95	933	7	2004-12-08
31	LAND EXCHANGE	MINDR	MBL	QUIT CLAIM	9.98	933	7	2004-12-09
32	LAND EXCHANGE	MINDR	MBL	QUIT CLAIM	0.19	933	7	2004-12-10
33	LAND EXCHANGE	MINDR	MBL	QUIT CLAIM	9.98	933	7	2004-12-11
34	LAND EXCHANGE	MINDR	MBL	QUIT CLAIM	19.88	933	7	2004-12-12
35	9-20-059-5701	CHRISTIANSEN	CITY/COUNTY	WARRANTY	6.07	195	225	1957-04-29
36	---	KOLK	CITY	WARRANTY	39.50	114	202	1929-12-26
37	---	FIGG	MBL	WARRANTY	13.31	961	233	2005-10-06
38	---	ADAMCZAK	MBL	WARRANTY	60.45	2018R	6226	2018-11-20
39	---	SCHUDLICH	CITY/COUNTY	WARRANTY	0.38	222	575	1960-09-30

TOTAL RETAINED ACRAGE = 747.64

LAND RELINQUISHED

TRADE	COURT	COUNTY	CONDEMNATION	ACREAGE	LIBER	PAGE	DATE	DESCRIPTION
TRADE-1	COURT	COUNTY	CONDEMNATION	38.39	699	684	1998-10-16	NE-SE - 34 - TRADED TO MDNR - L-933 PG-7
TRADE-2	LYTLE	COUNTY	WARRANTY	38.04	685	570	1998-10-22	NW-SE - 34 - TRADED TO MDNR - L-933 PG-7
TRADE-3	COURT	COUNTY	CONDEMNATION	36.73	699	686	1998-08-20	NE-SW - 34 - TRADED TO MDNR - L933 PG-7

AVIAGATION EASEMENTS									
ID	FAA GRANT	GRANTOR	GRANTEE	LIBER	PAGE	DATE	INSTRUMENT	ACREAGE	DESCRIPTION
AE23 (NO PREVIOUS NUMBER ASSIGNED)		JANKWIETZ	CITY/COUNTY	220	619	1960-07-18	AE	0.36	S 160' OF E 99' OF N 445.5' OF W1/2-NW-NW - 34, PARCEL 11
AE17		MDNR	COUNTY	222	107	NO DATE VISABLE - BETWEEN 1960 & 1968	AE	5.85	PARCEL 35
AE21		McCOY	MBL	282	225	1968-08-14	AE	0.90	E 90' OF W 306.5' OF NW-NW N OF US-31 - 33
AE22		KUENZER	MBL	282	228	1968-08-14	AE	1.00	E 110' OF W 416.5' OF NW-NW N OF US-31 - 33
AE20		TOWSLEY	MBL	282	231	1968-08-14	AE	2.41	W 216.5' OF NW-NW N OF US-31 - 33
AE19		DITTMER	MBL	285	270	1968-09-24	AE	5.90	PARCEL 3
AE24 (NO PREVIOUS NUMBER ASSIGNED)		CONSUMERS	CITY/COUNTY	291	431	1969-10-08	AGREEMENT		RESTRICTS HEIGHTS OF IMPROVEMENTS FOR EASEMENT L.17M PG.581 (SEE E1 OF EASEMENTS)
AE15		RINGEL	MBL	325	860	1974-07-10	AE	39.63	NW-SE - 28, AE15 INCLUDING PARCEL 37
AE14		CITY/COUNTY	MDNR	363	571	1978-01-17	AE RELEASE	18.92	RELEASES THEN RECONVEYS AE IN 27, 28, 29, 30 L.345, PG.527
AE14		MDNR	CITY/COUNTY	363	574	1978-03-14	AE	18.92	PARTS OF PARCELS 27, 28, 29, 30
QUIT CALIMS ALL AE'S TO DATE		COUNTY	MBL	766	561	2001-07-17	AE	74.61	

TOTAL ACREAGE = 74.61

ID	GRANTOR	GRANTEE	LIBER	PAGE	DATE	INSTRUMENT	TYPE	DESCRIPTION	
A					1909		HWY	PA 283 OF 1909 HIGHWAY ACT - PROVIDES 66' R/W EASEMENT FOR COUNTY/STATE ROADS	
B	MALGREN	CONSUMERS	110	108	1926-09-29	EASEMENT	ELECTRIC	PARCEL 2-C - FOR GUY ANCHOR	
C	KOLK	CONSUMERS	110	109	1926-09-29	EASEMENT	ELECTRIC	PARCEL 6 - FOR GUY ANCHOR	
D	PAISDESKI	CONSUMERS	110	119	1926-09-30	EASEMENT	ELECTRIC	PARCEL 1-C - FOR GUY ANCHOR	
E	TANGERSTROM	CONSUMERS	110	197	1926-09-30	EASEMENT	not defined/plotted	ELECTRIC	PARCELS 3, 4, 35, AE17 & AE19 - FOR GUY ANCHOR
F	SCHUDLICH	CHERRYLAND	359	645	1938-09-21	EASEMENT	not defined/plotted	ELECTRIC	PARCELS 7, 8, 9, 10, 11, 12-A, 12-B, & 18 - FOR ELECTRIC LINES
G	MALGREN	CHERRYLAND	359	644	1938-10-23	EASEMENT	not defined/plotted	ELECTRIC	PARCEL 2A-2B-2C - FOR ELECTRIC LINES
H	DICKOW	CHERRYLAND	359	643	1938-12-10	EASEMENT		ELECTRIC	PARCEL 13 - FOR ELECTRIC LINES
I	CHRISTIANSEN	CONSUMERS	17M	581	1939-11-09	EASEMENT	not defined/plotted	ELECTRIC	PARCELS 3, 4 & 35 - FOR ELECTRIC LINES
J	MANISTEE BANK	MDOT	18M	179	1942-03-26	EASEMENT	HWY	PARCEL 37 - FOR 90' & 100' R/W US-31	
K	CHRISTIANSEN	CONSUMERS	18M	57	1942-04-13	EASEMENT	not defined/plotted	ELECTRIC	PARCELS 3, 4 & 35 - FOR ELECTRIC LINES
L	THORIN	MDOT	18M	433	1942-05-19	EASEMENT	HWY	PARCEL 23 - FOR 60' R/W US-31	
M	CITY	MDOT	18M	181	1942-06-05	EASEMENT	HWY	PARCELS 1-B & 36 - FOR 60'&90' R/W US-31	
N	CHRISTIANSEN	MDOT	18M	222	1942-07-08	EASEMENT	HWY	PARCELS 3, 4 & 35 - FOR 60' R/W US-31	
O	COWAN	CONSUMERS	18M	75	1944-05-18	EASEMENT	not defined/plotted	ELECTRIC	AE20, AE21 & AE22 - FOR ELECTRIC LINES HEIGHTS
P	MBL	MANISTEE CRC	207	427	1959-01-06	EASEMENT	HWY	PARCEL 25 - FOR COUNTY ROAD - N 66' OF S1/2-NW - 34	
Q	MBL	CONSUMERS	286	259	1968-11-13	EASEMENT	not defined/plotted	ELECTRIC	PARCELS 1-C, 2-A, 2-B, 2-C, 6, 7, 10, 11, 12-A, 12-B, 13 & 18 - FOR UNDERGROUND ELECTRIC
R	THORIN	MANISTEE CRC	356	300	1977-08-23	EASEMENT	HWY	PARCEL 23 - FOR COUNTY ROAD (AIRPORT ROAD)	
S	RINGEL	MICH CON	364	965	1978-05-03	EASEMENT	GAS	AE15 - DOES NOT IMPACT ACTUAL AIRPORT PROPERTIES	
T	CITY/COUNTY	SHELL OIL	373	7	1978-11-29	EASEMENT	not plotted	OIL	PARCELS 1-C, 2-A, 2-B, 2-C, 6, 7, 12-A, 12-B, 13, 16, 24 & 26 - FOR PETRO LINE amended in L-387 PG-440
U	CITY/COUNTY	PHOENIX PETRO	376	383	1979-03-19	EASEMENT	OIL	PARCELS 1-C, 2-A, 2-B, 2-C, 6, 7, 12-A, 12-B, 13, 16, 24 & 26 - FOR PETRO LINE, 10' S & EAST OF SHELL ESMT (L-387, PG-440)	
V	MDNR	MICH CON	383	417	1979-10-03	EASEMENT	OIL	PARCEL 30 - FOR 20' PIPELINE ESMT	
W	CITY/COUNTY	CONSUMERS	--	--	1979-11-09	EASEMENT	not defined/plotted	ELECTRIC	PARCELS 1-A, 1-C, 31, 32, 33, & ?? - REFER TO E12, RECORDING UNKNOWN, EXHIBIT NOT ATTACHED, ELECTRIC LINE TO SERVICE PHOENIX WELL
X	RINGEL	MICH CON	386	71	1979-12-21	EASEMENT	not defined/plotted	OIL	PARCEL 37 & AE15 - FOR 50' PIPELINE ESMT - NOT DEFINED
Y	CITY/COUNTY	MICH CON	387	440	1980-02-05	EASEMENT	OIL	PARCELS 1-C, 16, 30 & 36 - FOR PIPELINE, MODIFIES & TAKES OVER SHELL L.373 PG.7	
Z	MBL	CONSUMERS	391	338	1980-06-09	EASEMENT		ELECTRIC	PARCEL 1-A - FOR 10 ELECTRIC ESMT AT TERMINAL FOR FAA
AA	CITY/COUNTY	CONSUMERS	393	439	1980-08-12	EASEMENT		ELECTRIC	PARCELS 1-A, 1-C, 31, 32 & 3 - FOR 10' ELECTRIC ESMT TO SERVICE OIL WELL
BB	COURT	PUBLIC	699	684	1998-10-16	EASEMENT		HWY	PARCEL 24 - W 16.5' PUBLIC INGRESS/EGRESS
CC	COUNTY	CONSUMERS	713	896	1999-06-15	EASEMENT	not defined/plotted	ELECTRIC	PARCELS 1-C, 2-A, 2-B, 2-C, 4, 6, 7, 8, 9, 10, 11, 12-A, 12-B, 18 & 24 - FOR 10' ELECTRIC ESMT, NOT DEFINED
DD	MBL	MDNR	933	9	2004-12-05	EASEMENT		HWY	PARCELS 31, 32, 33, 34 & 34 - FOR TWO 40' PUBLIC INGRESS/EGRESS ESMTS
EE	MBL	MDNR	933	16	2004-12-20	EASEMENT		HWY	PARCELS 2-C & 24 - FOR 40' INGRESS/EGRESS PUBLIC INGRESS/EGRESS ESMT, E 40' OF N1/2 - 34
FF	MBL	FIGG	961	233	2005-10-06	EASEMENT		PRIVATE DRIVE	PARCELS 36 & 37 - FOR 66' PRIVATE INGRESS/EGRESS ESMT TO SE-SE - 28 - E 66' OF SW-SE - 28
COUNTY ROAD COMMISSION			741	503	2000-09-14	PARTIAL ABANDONMENT OF CORD			ABANDONS PORTION OF EASEMENT P

(#) = PREVIOUSLY ASSIGNED LABEL - ALL OTHERS NOT ADDRESSED IN PREVIOUS EXHIBIT A'S
 >>>IN PREVIOUS EXHIBIT A'S EASEMENT (G) IS LISTED FOR CITY OF MANISTEE WATER WELL & WATER LINE, WHICH DO PHYSICALLY EXIST. THRU TITLE WORK THERE IS NO DOCUMENT FOR THIS UTILITY.

NO.	BY	DATE

DRAWN	SCHREUR
DATE	1/2021
CHECKED	WANDUNEN
DATE	3/2021

Prein & Newhof
 Engineers - Surveyors - Environmental Laboratory

FLYmanistee.com

MI SITE NO	51-1
LOC ID	MBL

MANISTEE COUNTY BLACKER AIRPORT
 MANISTEE, MICHIGAN
 PROPERTY TABLES

DRAWING NO.
 15/15